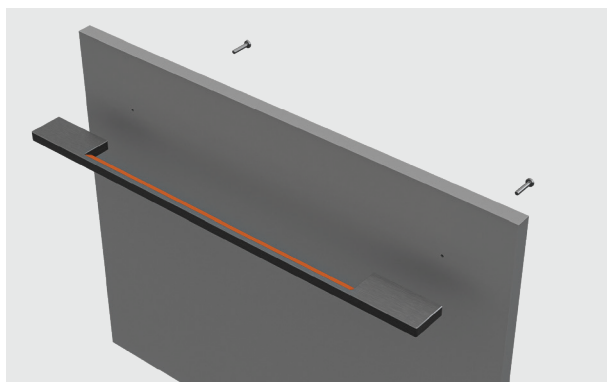


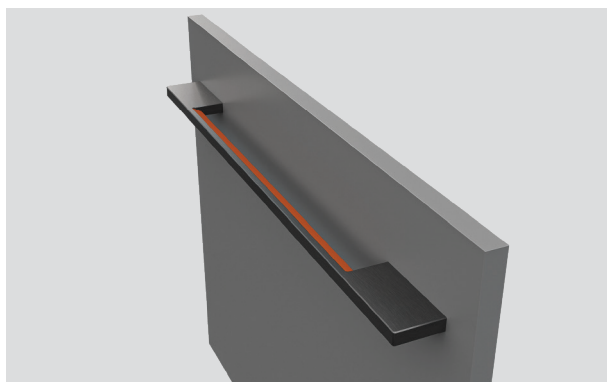
1. Mark the handle location on the panel. Ensure distance between holes is 432mm.

Drill the holes using a 6mm drill bit. Counterbore to a maximum depth of 5mm from the back of the panel.



2. Align the angled edge of the handle upwards. Ensure the handle is aligned with the pin holes on the panel.

Insert the supplied pan head screws from the rear of the panel. Secure the handle by tightening the screws using a crosshead driver.



3. Follow the instructions in the installation guide to attach the custom panel to the drawer or dishwasher.