

FISHER & PAYKEL

FABRIC CARE SOLUTION

WASHER ON PLINTH INSTALLATION

WH1260H1, WH1260HG1, FM2060S1 and FM2060SG1 models

INSTALLATION GUIDE

CN

COMPONENTS REQUIRED

TOOLS

Supplied

- Spanner (washer)
- Spanner (plinth)
- Allen key

Not supplied

- Box cutter
- Phillips screwdriver
- Level

PARTS

Supplied

- 1x Cold water hose
- 1x Hot water hose
- 1x Blanking cap
- 7x Plugs
- 2x Plinth bolt hole covers
- 4x M10 bolts

Supplied (not required*)

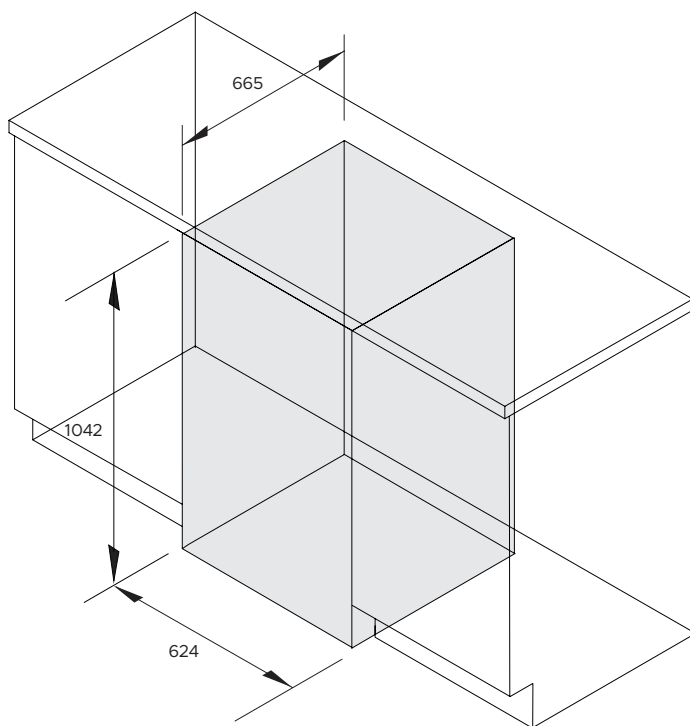
- 1x Communication cable
- 2x Dryer front brackets
- 2x Dryer rear brackets
- 2x Dryer rear mounting screws

*Not required for single product on plinth installation.

ACCESSING YOUR PRODUCT SPECIFICATIONS



For full product, cabinetry and service specifications, refer to the Planning Guide. To access the Planning Guide, scan the QR code or visit fisherpaykel.com/cn/zh_CN/specify. Search by appliance type, product name or model code.



PRIOR TO INSTALLATION



fisherpaykel.com/cn/zh_CN/specify

1. Ensure cabinetry and servicing specifications have been met and clearances have been considered.

Refer to the Planning Guide for details.



2. Ensure floor is level and clear and a finished return has been created.



3. Ensure power will remain accessible following install to allow access for any future product maintenance.

Service holes should be smooth with grommets installed where required.

Refer to the services section of the Planning Guide for more details.

UNPACK



1. Cut the straps and the line printed on the top of the washer carton. Lift to remove. Discard braces and corner posts. Remove any packaging and accessories from the drum and base packer.

Dispose of packaging responsibly.



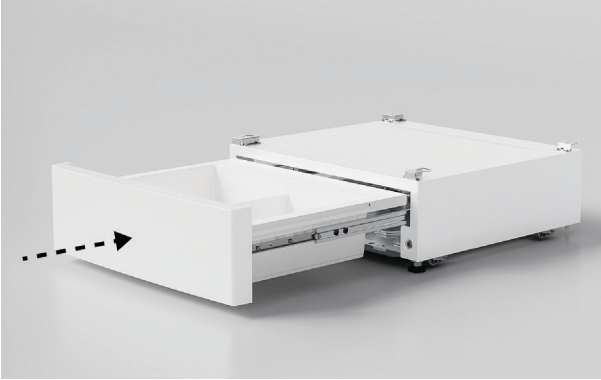
2. Cut the straps and tape to open the plinth carton from the top. Remove the EPS cap before lifting the plinth out.

Set cardboard aside for later use. Ensure accessories are removed from the EPS cap before discarding EPS and rubber spacers responsibly.

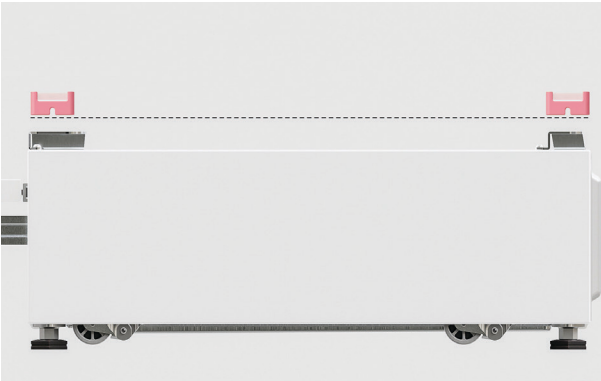


3. Protect flooring before positioning washer as close to the installation location as possible, ensuring enough working room is left available.

LEVEL PLINTH



1. Push the front of the plinth to open. Remove the divider before closing the drawer.



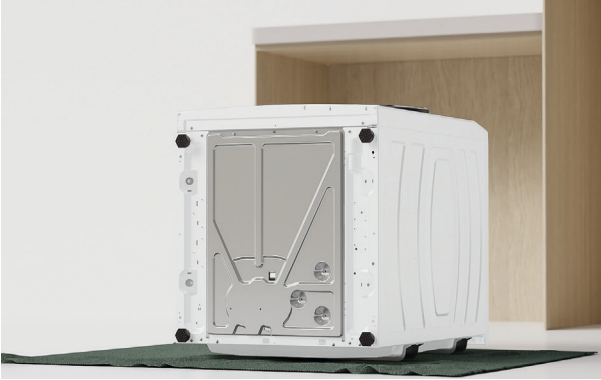
2. Place the plinth in its final install location. Adjust the feet using the supplied spanner until the plinth is level front to back and corner to corner.



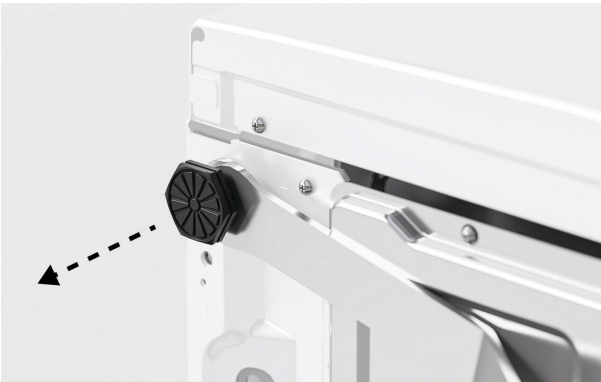
3. Using the spanner provided, tighten the lock nuts against the base of the plinth to lock the feet in position.

Recheck that the plinth is level, front to back and side to side. Once level, move the plinth to an accessible location to allow washer/dryer to be installed.

FIT WASHER TO PLINTH



1. Tilt the washer back onto a protected surface such as the plinth carton. Ensure cords and hoses are not crushed. For new products, we recommend keeping the transit bolts fitted during this step.



2. Unwind feet using the supplied spanner to remove.

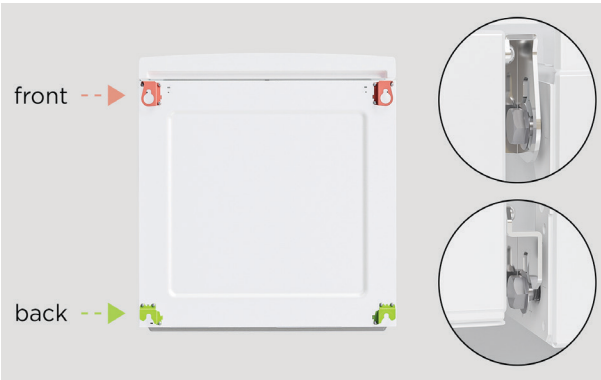


3. Partially fit the four M10 bolts supplied with the storage plinth to the washer.

FIT WASHER TO PLINTH



4. Using the spanner provided as a spacer, ensure a 4mm gap is left between the bolt head and the chassis.



5. Align all four brackets to the M10 bolts on the washer and slot into place.

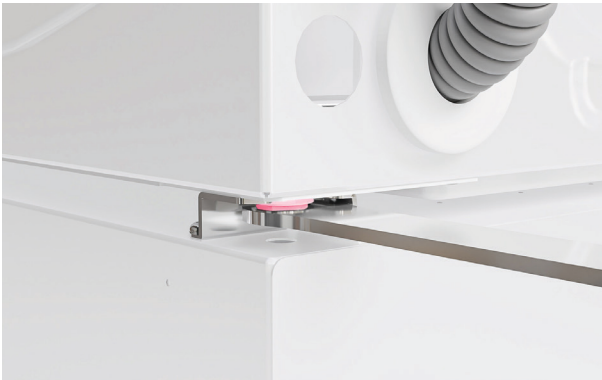


6. Ensure plinth is aligned on both sides as shown before tightening the front bolts with the supplied spanner.

FIT WASHER TO PLINTH



7. Lift the washer upright, avoiding lifting from the lid. Take care as storage drawer may open.



8. Tighten the rear bolts.

REMOVE WASHER TRANSIT BOLTS



1. Using the supplied spanner, remove all four transit bolts from the back of the washer.

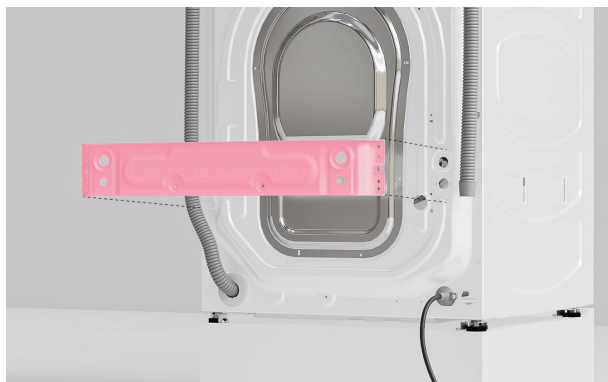


2. Pull the rubber grommets and spacers outwards to remove.

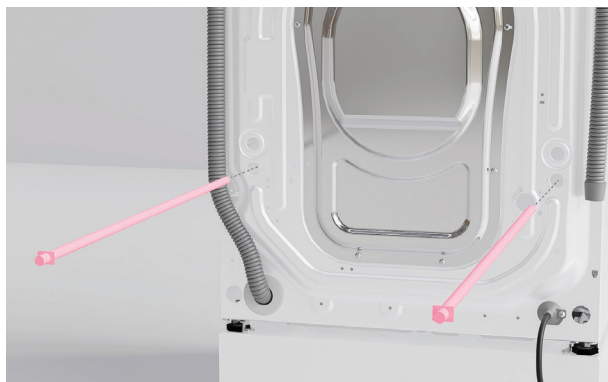


3. Using a Phillips screwdriver, remove the two side brackets.

REMOVE WASHER TRANSIT BOLTS



4. Remove and discard the braces.

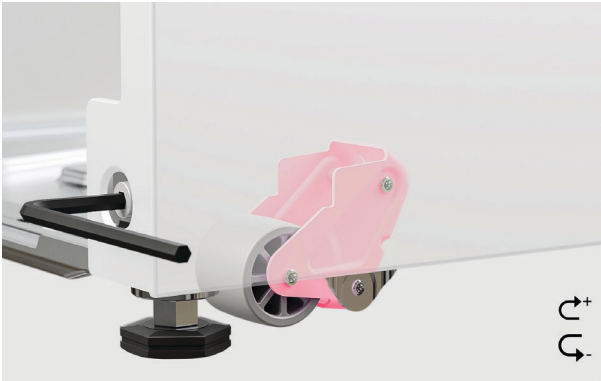


5. Pull the two transit rods outwards to remove.
Set aside for future use.

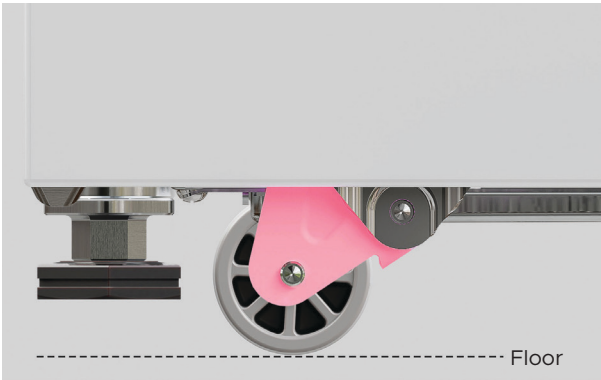


6. Cover the transit bolt holes using the supplied plugs.

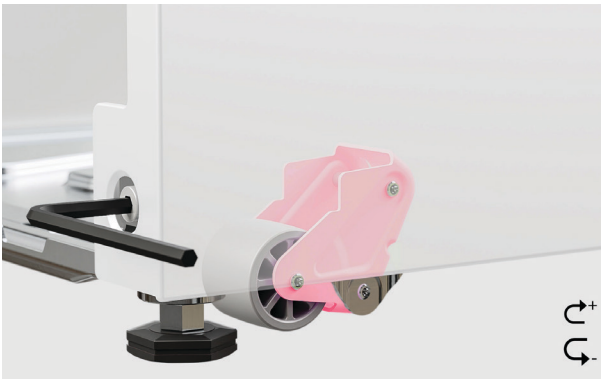
RAISE PRODUCT SET



1. Partially roll stacked products into alcove and check alignment. To do this, use the supplied 6mm hex key, rotate clockwise to lower both sets of wheels via the adjustment screws.



2. Ensure all feet are raised off the floor before rolling the plinth to the final install location.



3. Using the supplied 6mm hex key, rotate counter-clockwise to raise both sets of wheels via the adjustment screws. Lower the wheels and remove product from alcove.

CONNECT CABLES AND HOSES



fisherpaykel.com/cn/zh_CN/specify

1. Refer to the Planning Guide for full service information.

Supply: 220 - 240V, 50Hz

Service: 10A

Outlet: 3-prong grounding-type

Supply: Hoses provided

Pressure: 50KPa (7psi) - 1MPa (150psi). Min 6 litres/min.



2. Connect the angled end of cold hose to the cold water inlet on the washer.



3. Connect angled end of hot water hose to the orange outlet on the washer. If hot hose is not required, install a blanking cap.

CONNECT CABLES AND HOSES



4. Partially roll products into the alcove.
Take care not to crush the cables and hoses.



5. Route the power cables and hoses through service holes.
Ensure power will remain accessible following install to allow access for any future product maintenance.



6. Install the drain hose guide to the back wall.
Refer to the planning guide for placement details.

CONNECT CABLES AND HOSES



7A. Standpipe Installations:

Route the drain hose through the guide and place into the standpipe.

Ensure a maximum of 20mm of the hose rests in the standpipe.



7B. Spigot Installations:

Drill out blanking insert from the spigot.

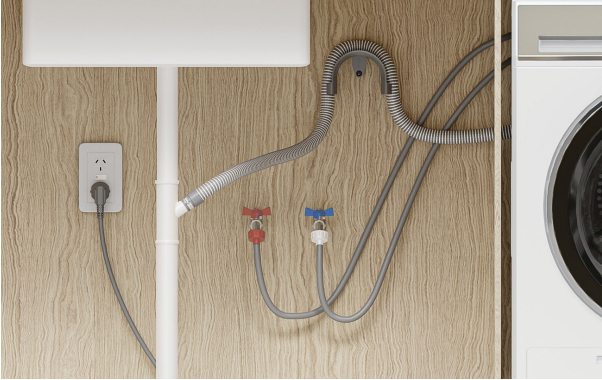
Route the drain hose through the guide and place into the spigot. Secure using a hose clamp.



8. Connect hoses to taps before turning on. Check for leaks at all connection points.

If possible, recheck for leaks 24 hours after installation.

CONNECT CABLES AND HOSES



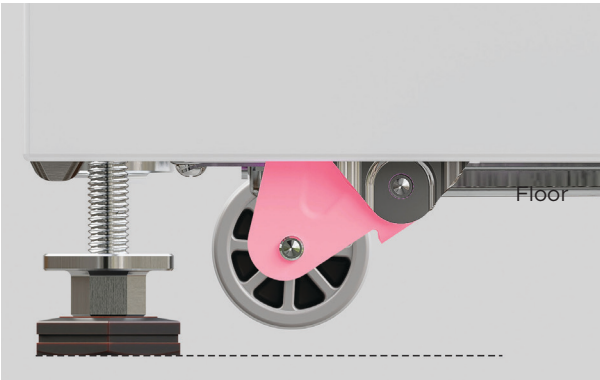
9. Connect the power cable and check washer is powered on and connected.

INSTALL WASHER



1. Roll washer into the alcove.

Take care not to damage hoses or power cord.

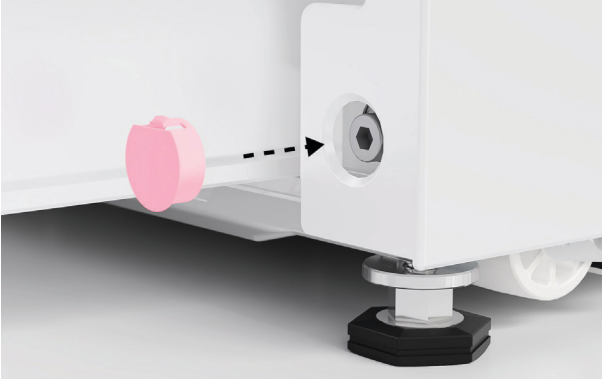


2. Turn the adjustment screw counter-clockwise to retract the wheels. Ensure the wheels are fully raised off the floor.



3. Check alignment and ensure required clearances are maintained. Adjust as required.

INSTALL WASHER



4. Once adjustment is complete, fit the plinth bolt hole covers.

FISHERPAYKEL.COM

© Fisher & Paykel Appliances 2026. All rights reserved.

The models shown in this guide may not be available in all markets
and are subject to change at any time.

The product specifications in this guide apply to the specific products and
models described at the date of issue. Under our policy of continuous product
improvement, these specifications may change at any time.

For current details about model and specification availability in your country,
please go to our website or contact your local Fisher & Paykel dealer.

431981B 05.26