

FISHER & PAYKEL

HEAT PUMP CLOTHES DRYER

DH9060H1 & DH9060HG1 models

USER GUIDE

CN

CONTENTS

Safety and warnings	4
First use	8
Setting a cycle	11
Loading suggestions	14
Dry cycles	16
Cycle settings	18
Cycle options	19
W-Fi connection and Remote Mode	21
Cleaning	23
Cleaning the lint filter	24
Emptying the water tank	25
Cleaning the condenser filter	26
Troubleshooting	29
Fault codes	34
Manufacturer's Warranty and Service Guide	35

SAFETY AND WARNINGS

⚠ WARNING!



Electric Shock Hazard

Failure to follow this advice may result in electric shock or death.

- If you are using an extension cord or a portable electrical outlet device (eg multi-socket outlet box), ensure that it is positioned so that it does not come into contact with water or moisture.

⚠ WARNING!



Fire Hazard

- Only dry fabrics that have been washed with water.
- Do not use heat to dry articles containing foam rubber or similarly textured rubber-like materials, dry on COOL AIR.
- Never stop a tumble clothes dryer before the end of the drying cycle unless all items are removed and spread out in order to dissipate the heat.
- A clothes dryer produces combustible lint; the lint filter must be cleaned before each drying cycle.
- Failure to follow the warnings outlined in these user instructions can cause a fire hazard.
- Failure to follow these instructions can result in death or personal injury.

READ AND SAVE THIS GUIDE

SAFETY AND WARNINGS

WARNING!

Read Safety Guide. Failure to follow all guides and rules could cause personal injury or property damage. Use this appliance only for the intended purpose as described in the user guide and installation guide of this appliance. When using this appliance, always exercise basic safety precautions including the following:

General

- Do not touch or operate the appliance with wet hands or with bare feet.
- A damaged power cord must be replaced by a Fisher & Paykel trained and supported service technician or similarly qualified person in order to avoid a hazard. Do not use the machine until it has been repaired to avoid a risk of electric shock.
- Do not operate this appliance if it has been damaged during transport. Contact your Fisher & Paykel dealer or Fisher & Paykel trained and supported service technician.
- This product has been designed for personal, family or household use. This product is not designed for any commercial use. Any commercial use will terminate this products manufacturer's warranty.
- This appliance is not intended for use by persons (including children) with reduced physical, sensory or mental capabilities, or lack of experience and knowledge, unless they are supervised or given instructions on how to use the appliance by someone responsible for their safety.
- Supervise children to ensure they do not play with the appliance or climb inside the drum.
- Do not swing on or put weight on the door.
- Undergarments that contain metal reinforcements should not be placed in the dryer. Damage to the dryer can result if the metal reinforcements come loose during drying. If you wish to dry these items use a drying rack or place in a garment bag.
- Check and remove all objects from pockets, eg lighters and matches.
- Items should go through the cooling phase in the final part of the cycle. This ensures items are left at a temperature where they will not be damaged. If for any reason the cycle is stopped before it has finished, dry clothes should be removed immediately and not left in the appliance. Items should be quickly spread out flat to cool so heat can dissipate, not left bunched up, eg in a clothes basket or in a pile.
- In the event of a power outage the cycle will be paused when power is restored. Press start to resume the cycle.
- The only user-removable parts of the dryer are the filters, water tank and drying rack. No other parts are designed to be removed by anyone other than a Fisher & Paykel trained and supported service technician.
- For problems that cannot be solved from information in the user guide, turn off and unplug your appliance and contact a Fisher & Paykel trained and supported service technician.
- Never attempt to repair the appliance yourself.
- Never put dripping wet clothes in or on top of the dryer as excess water may cause an electrical hazard.
- Do not under any circumstances place an electric blanket or any other electrical, plastic or rubber items in the appliance, unless the care label specifically states it is safe to do so.
- Do not overload your dryer beyond its rated capacity.

MODEL	MAXIMUM CAPACITY* (KG)
DH9060H1, DH9060HG1	9

SAFETY AND WARNINGS

*Capacity refers to the maximum dry weight of items the dryer can dry at any one time

- Do not dry curtains in your dryer.
- For models with a water tank, never run the dryer without the water tank in place unless drain hose is connected. For models without a water tank, the drain hose must be connected.
- Do not use the water collected in the water tank for drinking or food processing.
- If the water tank becomes full, the appliance will pause and sound an alarm. You must empty the water tank before the appliance can continue running.

Lint

- Do not operate this appliance without the lint filters in place, or allow lint to accumulate in or around the appliance.
- Accumulated lint in the appliance can become a fire hazard; it also reduces the efficiency of the appliance by causing longer drying times and increased power consumption.
- Clean the lint filter before every load.
- Ensure the area around the appliance is clear of lint.
- If the lint filter becomes damaged, contact your Fisher & Paykel trained and supported service technician to arrange getting a new filter. Do not operate your appliance with a damaged lint filter or without the filter in place, as this will cause damage to your appliance.

Spontaneous combustion

To reduce the risk of fire the following should be observed:

- Items that have been spotted or soaked with vegetable oil or cooking oil are a fire hazard and should not be placed in the appliance.
- Oil-affected items can ignite spontaneously, especially when exposed to heat sources such as this appliance. The items become warm causing an oxidation reaction in the oil. This oxidation creates heat. If the heat cannot escape the items can become hot enough to catch fire. Piling, stacking or storing oil-affected items can prevent heat from escaping creating a fire hazard.
- If it is unavoidable that fabrics that contain vegetable oil, cooking oil or have been contaminated by hair care products be placed in this appliance, they should first be washed in hot water with extra detergent — this will reduce, but not eliminate the fire hazard. The cooling cycle should be used to reduce the temperature of these items. They should not be removed from the appliance and piled or stacked while hot.
- Items that have previously been cleaned in, washed in, soaked in or spotted with flammable liquids or solids, eg petrol/gasoline, kerosene, dry cleaning solvents, vegetable or cooking oil, acetone, denatured alcohol, some brands of spot removers, turpentine, waxes and wax removers or other flammable or explosive substances should not be placed in the appliance.
- The appliance is not to be used if industrial chemicals have been used for cleaning.
- Fabric softeners or similar products should not be used in the appliance to eliminate the effects of static electricity, unless this practice is specifically recommended by the manufacturer of the fabric softener product.
- Items such as foam rubber (latex foam), shower caps, rubber backed articles, clothes or pillows fitted with foam rubber pads, waterproof textiles, shoes containing rubber or plastic items should not be placed in the appliance. These materials can spontaneously combust when heated.

SAFETY AND WARNINGS

- Do not dry unwashed items in the appliance.
- When using **REFRESH BY STEAM** cycles on unwashed clothing ensure there are no flammable substances on them.

Installation

- The appliance must not be supplied through an external switching device, such as a timer, or connected to a circuit that is regularly switched on and off by a utility.
- We do not recommend the use of extension cords or portable electrical outlet devices for safety reasons.
- Install the appliance on a solid and level floor surface.
- The appliance must be installed in a well-ventilated, dust-free environment.
- The appliance must not be installed on any textured floor coverings (eg carpet, rugs). Ensure that openings at the base of the appliance are not obstructed.
- The appliance must not be installed behind a lockable door, a sliding door or a door with the hinge on the opposite side to that of the tumble dryer, in such a way that a full opening of the tumble dryer door is restricted.
- If installing behind a cabinetry door, it must be hinged on the same side as the dryer and there must be a minimum clearance of 40mm from the front of the dryer door to the internal face of the cabinetry door for the product to operate safely. The enclosed space must be provided with sufficient ventilation to meet local building code requirements or the door must be open while the product is operating.
- This appliance can be installed on a compatible Fisher & Paykel plinth. To ensure stability, the plinth must be fitted correctly with the appliance. For installation instructions and compatible plinth models, refer to fisherpaykel.com.
- Do not install or operate this appliance on any other plinth or structure.
- For more information refer to the installation guide. To access, go to fisherpaykel.com/ specify and search by appliance type, product name or model.

Water supply requirements

- Inlet water pressure: Max. 1MPa (145psi), Min. 30kPa (4.5psi)
- Inlet water flow rate: Min. 6 litres/minute
- The cold water temperature should not exceed 35°C. Temperatures above these may cause the appliance to fault or cause damage to it.
- A pressure-reducing valve must be installed if pressure is higher than 1Mpa.
- New hose sets provided should be used to connect the appliance to the water mains. Old hose sets should not be re-used.
- We recommend the inlet hose(s) are changed every 5 years. **WARNING:** Failure to do so may result in a flood and damage to property.

Disposal

- When disposing of this appliance, it is recommended that the door is removed to avoid children getting trapped inside, and that the electrical cable is cut off close to the dryer.

FIRST USE

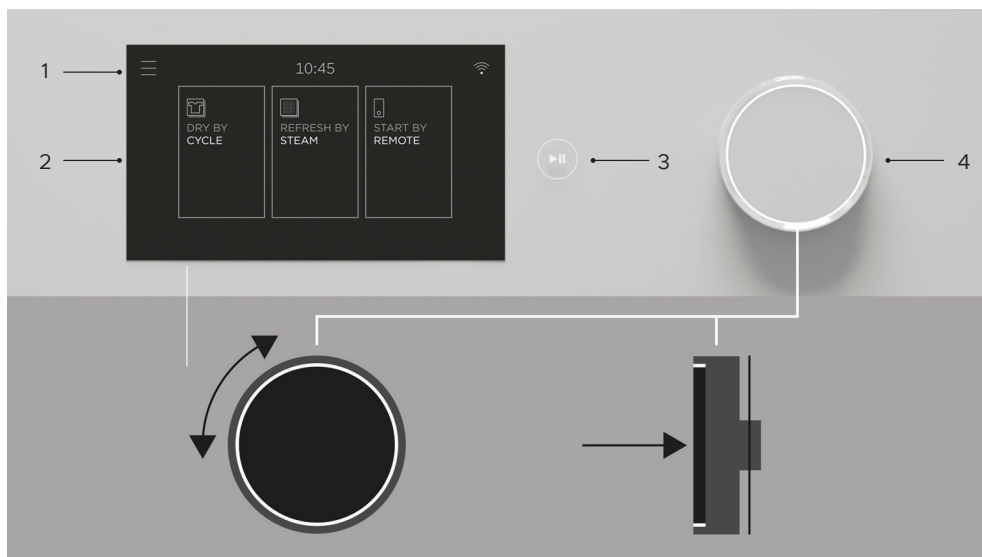


Features and accessories

- ① Water tank
- ② Dryer controls
- ③ Drum light
- ④ Drying rack
- ⑤ Sensors
- ⑥ Lint filter
- ⑦ Condenser filter*

*Located behind filter cover.

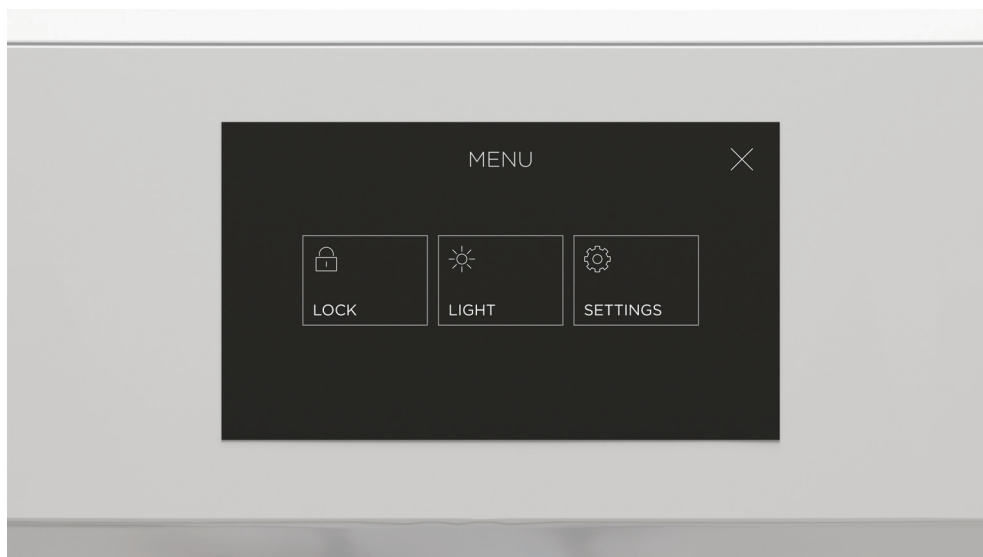
FIRST USE



Control panel

① Menu	Press to access additional features and settings.
② Touchscreen display	Use to navigate and select cycles, features and settings.
③ Start/Pause button	Press to start or pause a cycle.
④ Control dial	<ul style="list-style-type: none">• Press the dial to turn the display on.• Turn the dial to scroll.• Press to select or confirm.• Press and hold to go back or to turn the display off.

FIRST USE



Menu

LOCK



Lock the controls to prevent accidental use. The controls can be locked at any time including while a cycle is running. When locked, the controls will be unresponsive except to pause a cycle. Press and hold the screen to unlock.

LIGHT



Turn the drum light ON/OFF.

SETTINGS



Adjust the appliance settings to suit your preferences or set up a Wi-Fi connection. Refer to 'Wi-Fi connection & Remote mode'.

SETTING A CYCLE

Before you begin

- Check pockets for items that could damage your clothes or get caught in the dryer.
- Check and empty the lint filter.
- Check and empty the water tank (if not set up for automatic draining).

1



Fit the drying rack if required. Refer to 'Loading suggestions'.

2



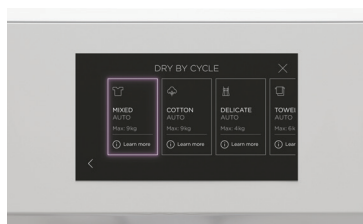
Place items in the dryer.
For best results, dry similar items together and do not exceed the maximum capacity for the selected cycle.

3



Press the dial to turn on the display.

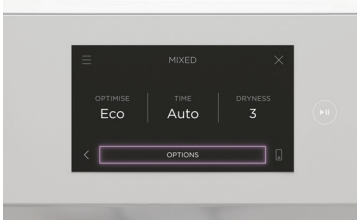
4



Select a drying mode then select a cycle.

SETTING A CYCLE

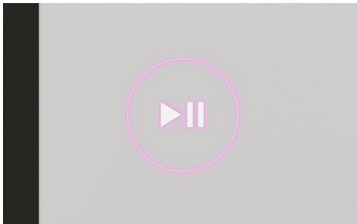
5



Adjust the settings as needed or press **OPTIONS** to access additional cycle options.

For more information refer to 'Cycle settings' and 'Cycle options.'

6



Press **▶||** to start the cycle.

SETTING A CYCLE

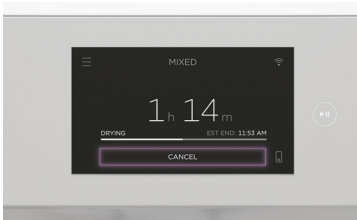
Pausing a cycle



Press ►|| to pause the cycle.

Cancelling a cycle

If cancelling a cycle partway through, remove items immediately and spread out to cool. Do not leave hot items in the dryer or in a clothes basket. Take care as the drum and items may be hot.



Press CANCEL.

LOADING SUGGESTIONS

Sorting

- Sort items into loads of similar items, and loads that will likely take similar times to dry. This prevents the possibility of some items becoming over-dried whilst others are still damp.
- Always separate coloured items from whites, especially when they are new.
- Colour run could be an issue, especially if using DELAYED START.
- Close zippers, hooks and eyes, and other fastenings (ie fasten the opening of duvet/duona covers), and remove loose bra wires. These can damage your dryer and clothes.
- Items of clothing with screen-printing should be turned inside out to prevent damage to the print.
- Care labels on garments provide valuable information about the fabric type and how the garment should be dried. Always follow the advice on garment labels.

Loading

- Loading items correctly will help to minimise creasing and wrinkling, and ensure the load is dried evenly.
- Allow enough room in the dryer for clothes to tumble freely. Load the dryer in terms of the space the garments take up when dry, rather than when they are wet.
- Shake clothes out and load individually to help items dry evenly and reduce tangling.
- Dry permanent press items (eg business shirts) together on the EASY IRON cycle with the WRINKLE FREE option on. This will help reduce wrinkling and the need for ironing.
- Hang garments as soon as the drying cycle is complete to reduce the need for ironing.

Drying times

- Drying very small loads is inefficient. Try to dry medium to large loads.
- Heavier items (towels, flannelette sheets) will take longer to dry than light items (synthetics and polyester cotton sheets and shirts).
- Drying times can be reduced by spinning the wash load at the highest spin speed suitable for the load type in your washing machine.
- Check bulky items during the cycle to ensure even drying, pause the dryer and reposition the item if necessary.

Lint

Some items are lint givers, while others are lint collectors. Always dry lint givers and collectors separately.

LINT GIVERS	LINT COLLECTORS
Towels	Synthetics, eg polar fleece
Flannelette sheets	Corduroy
	Polyester cottons

LOADING SUGGESTIONS

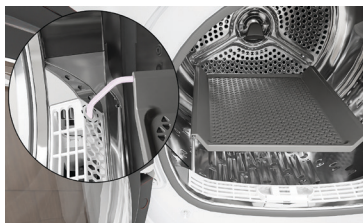
Drying rack



Use the drying rack for items that cannot be tumbled such as sneakers, hats and soft toys.

Use the rack with the following cycles:

- RACK DRY
- SNEAKERS
- SOFT TOYS (optional)



To fit the drying rack, insert the legs into the slots in lint filter then lower into place.

DRY CYCLES

Your dryer has a number of cycles to suit your fabric care needs. Selecting the most appropriate cycle for each particular load will help ensure you get the best results.

DRY BY CYCLE		
CYCLE	DESIGNED FOR	MAX. LOAD SIZE (KG)
MIXED	An everyday cycle for mixed fabrics. Ideal for items like t-shirts and trousers.	9
COTTON	A high heat cycle for natural cotton fabrics.	9
DELICATE	A gentle cycle for delicate items such as blouses and dresses.	4
TOWELS	Designed for drying thick and absorbent items such as towels.	6
SHEETS	An optimised cycle for bed linen. Ideal for drying sheets, covers and pillowcases.	4
WOOL	An extra gentle cycle to care for woollen items. This cycle meets the Woolmark requirements for machine washable items.	1
ULTRA DELICATE	An extra gentle cycle for very delicate items such as lace.	1
SILK	An extra gentle cycle designed specifically for silk items.	1
ACTIVEWEAR	An extra low heat cycle optimised for activewear. Ideal for synthetic and elasticated items.	2
DENIM	An everyday cycle to care for denim fabrics.	3
HEAVY	A stronger cycle designed for durable fabrics.	8
SANITISE	An extra hot cycle designed to eliminate bacteria. Ideal for sanitising items like towels and sheets.	4
SPORTS	A medium heat cycle designed for sportswear. Suitable for more durable fabrics.	4
SYNTHETICS	An everyday cycle for synthetic fabrics. Ideal for synthetic fabrics and polyester-cotton blends	4
BULKY	A gentle cycle for large or bulky items. Ideal for items like jackets, duvets and quilts.	3
OUTDOOR	A low heat cycle designed for outdoor clothing and high performance fabrics.	2
EASY IRON	Designed to minimise creasing in items like shirts. Items are ready to iron at the end of the cycle.	4
RACK DRY	Designed for items that cannot be tumbled. This cycle requires the drying rack.	3
SOFT TOYS	A gentle cycle for looking after soft toys. This cycle can be used with the drying rack.	4 items

DRY CYCLES

DRY BY CYCLE

CYCLE	DESIGNED FOR	MAX. LOAD SIZE (KG)
SNEAKERS	A gentle cycle for drying sneakers and sports shoes. This cycle requires the drying rack.	2 pairs
COOL AIR	A heat free cycle for airing items.	4

REFRESH BY STEAM

All REFRESH BY STEAM cycles are designed for refreshing dry items. To dry wet items select DRY BY CYCLE.

REFRESH BY STEAM

CYCLE	DESIGNED FOR	MAX. LOAD SIZE (KG)
MIXED	Designed to refresh dry items by reducing creases and odours. Ideal for mixed fabrics.	3
SHIRTS	Designed to refresh shirts by reducing creases and odours.	3
DELICATE	A gentle cycle to refresh delicate items such as blouses and dresses.	3
SANITISE	A high heat cycle designed for sanitising dry items.	3

☑️ COTTON with ECO, AUTO and DRYNESS: 3 selected is the recommended energy saving cycle for everyday drying.

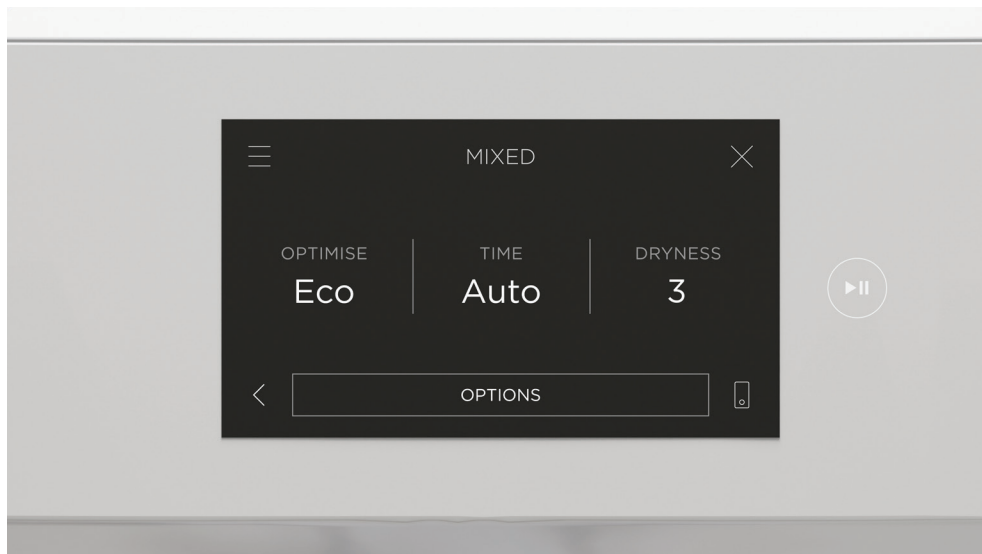
☑️ Woolmark Wool Care

The wool drying cycle of this machine has been approved by The Woolmark Company for the drying of machine washable wool products provided that the products are washed and dried according to the instructions on the garment label and those issued by the manufacturer of this machine. M2018.



CYCLE SETTINGS

Adjust the default cycle settings to suit your preferences. Tap the setting to select then adjust as needed.



OPTIMISE

Optimise the cycle as required to reduce noise, save time or save energy. Some optimise options are not available on certain cycles to ensure optimal results.

TIME

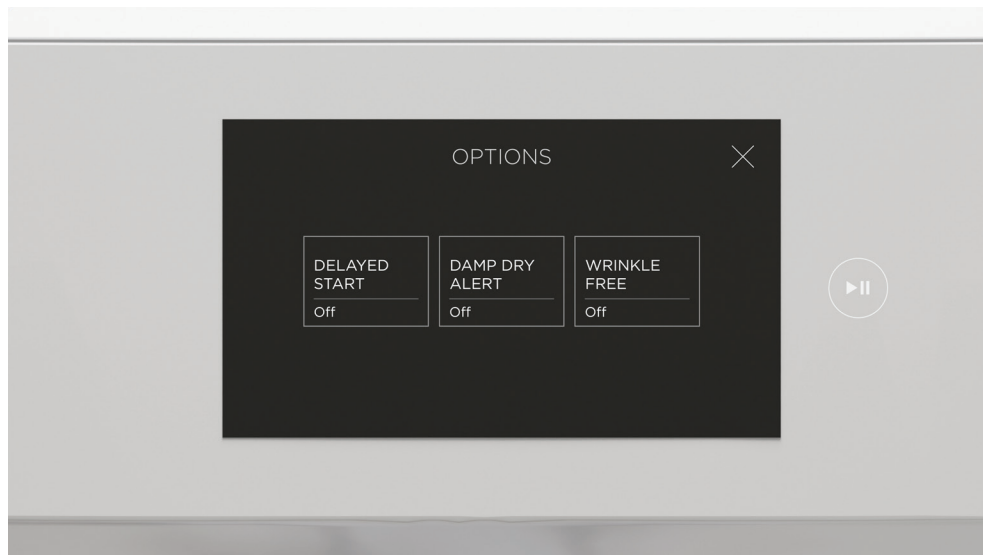
Set your preferred cycle time. The cycle will end after the set time. If the time is set to AUTO the cycle will end automatically when the load reaches the selected dryness level.

DRYNESS

Set the level of dryness required. The dryer will sense the remaining moisture in the load to end the cycle. Level 1 is the dampest setting, while level 5 is the driest. Try a higher or lower setting if the load dryness is not as expected.

CYCLE OPTIONS

Select additional cycle options as needed to suit your preferences.



DELAYED START

Set a time for the cycle to start. Avoid using DELAYED START for damp, non-colourfast items as this may cause dye run to occur.

WRINKLE FREE

After the cycle is complete the load will continue to tumble periodically to help reduce wrinkles. WRINKLE FREE will remain active for up to 8 hours or until cancelled. To cancel, touch the screen or open the door.

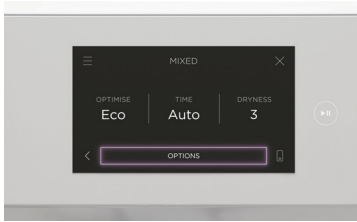
DAMP DRY ALERT

Set an alert for when the load reaches damp dry level. Pause the cycle to remove items that do not need further drying. Restart the cycle to continue drying the remaining load.

CYCLE OPTIONS

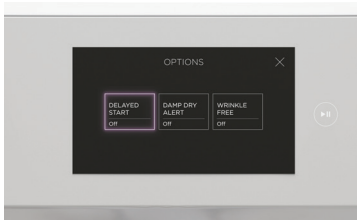
Accessing options

1



Select a cycle then press OPTIONS to access.

2



Select a cycle option and adjust as needed.

W-FI CONNECTION AND REMOTE MODE

Your appliance may be connected to your home wireless network and operated remotely using the app.

Connect your appliance to ensure it stays up to date with the latest software and features.

Getting started

- Ensure your home Wi-Fi network is turned on.
- You will be given step-by-step guidance on your mobile device.
- It may take up to 10 minutes to connect your appliance.
- For further guidance and troubleshooting, please refer to the app.

On your mobile device:

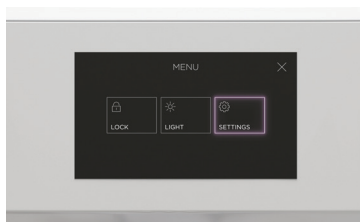


- ① Download the app. Scan the QR code or search “海尔智家” in your device’s app store.
- ② Register and create an account.
- ③ Add your appliance and set up the Wi-Fi connection.



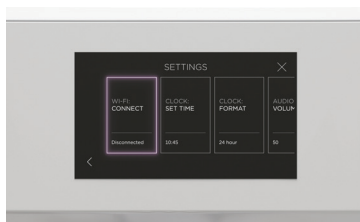
Connecting to your home Wi-Fi

1



Press  then select SETTINGS.

2

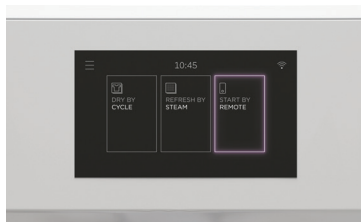


Select WI-FI: CONNECT then WI-FI SETUP and follow the instructions onscreen.

WI-FI CONNECTION AND REMOTE MODE

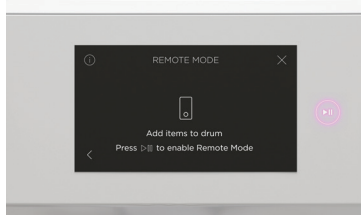
Enabling Remote Mode

1



Select START BY REMOTE.

2



Follow the instructions onscreen then press ►|| .
Remote Mode is now enabled.

CLEANING

Surfaces and accessories

Wipe with a damp cloth and mild detergent, then dry with a clean, lint-free cloth. We do not recommend using the following cleaning products as they may cause damage:

- Plastic or stainless steel scouring pads
- Abrasive, solvent, household cleaners
- Acid or alkaline cleaners
- Hand washing liquids or soap
- Stainless steel cleaners or polishes
- Laundry detergents or disinfectants

Inside the dryer

Check and clean the inside of the drum regularly. If the drum has any residual dirt or lint stuck to it, remove this and wipe it clean with a damp cloth. Do not leave any metal objects in the drum, as these may cause rust.

Sensors

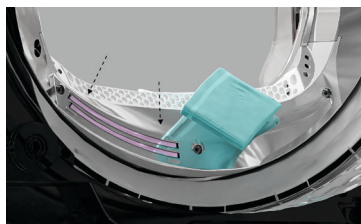
The sensors detect whether the laundry is dry or not. Clean the sensors regularly to maintain optimum performance.

1



Locate the metal sensors just behind the lint filter.

2

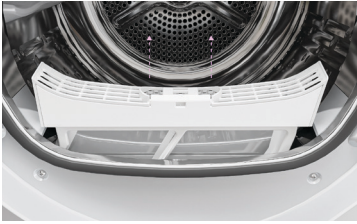


Wipe with a soft cloth dampened with vinegar, then dry with a clean cloth.

CLEANING THE LINT FILTER

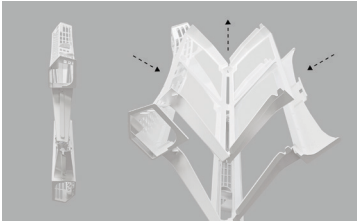
Check and clean the lint filter after every load to prevent build up. Lint can become a fire hazard if it is allowed to accumulate in or around your dryer.

1



Remove the lint filter.

2



Open the filter and wipe clean, then replace.
Ensure the lint filter is correctly in place before running another cycle.

EMPTYING THE WATER TANK

During drying cycles, water is collected in the water tank at the top left of the dryer. Empty the water tank after every load.

1



Use the handle to pull the water tank out.
Keep the tank level when removing to prevent water from spilling.

2



Empty the water tank then replace.
Ensure the water tank is correctly in place before running another cycle.

Never run the dryer without the water tank in place unless the drain hose has been installed. You do not need to empty the water tank if you have set up the drain hose to drain the water automatically. Refer to the installation guide for instructions on installing the drain hose.

CLEANING THE CONDENSER FILTER

Clean the condenser filter, filter foam and evaporator grid regularly to maintain optimum performance.

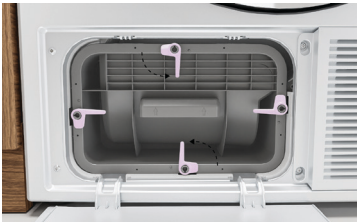
Removing the condenser filter

1



Open the filter cover to access the condenser filter.

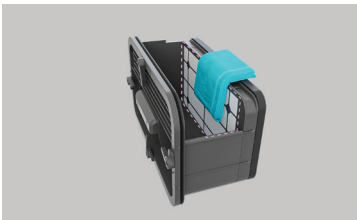
2



Turn the four condenser lock levers 90° then pull out the condenser filter.

Cleaning the condenser filter:

3



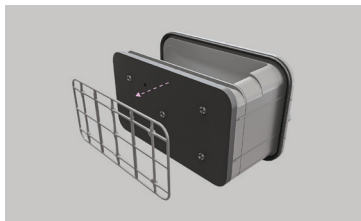
Wipe clean or use a vacuum to remove any lint build-up from the mesh surface of the filter.

CLEANING THE CONDENSER FILTER

Cleaning/replacing the condenser filter foam

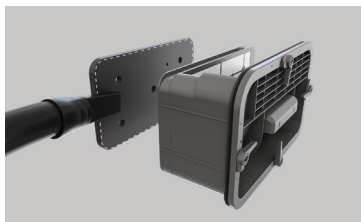
The condenser filter foam may need to be replaced if it is very blocked or has deteriorated. Three filter foams are provided with your dryer. Replacement filters are available via www.fisherpaykel.com

4



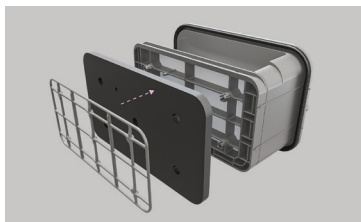
Remove the bracket securing the foam to condenser filter.

5



Remove the foam and use a vacuum with a narrow attachment to remove any lint build-up.

6



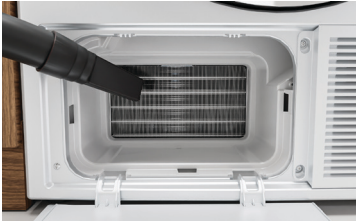
Replace the foam and secure with the bracket.

CLEANING THE CONDENSER FILTER

Cleaning the evaporator grid

The evaporator grid is located behind the condenser filter. Take care when cleaning as the metal fins have sharp edges.

7

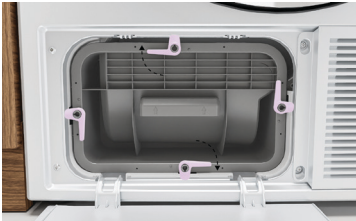


Clean carefully with a vacuum, using a dusting brush or a narrow crevice attachment.

Take care not to bend the fine metal fins.

Replacing the condenser filter:

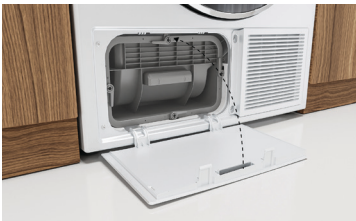
8



Replace the condenser filter and secure using the lock levers.

Ensure the locks are securely engaged.

9



Close the filter cover.

TROUBLESHOOTING

PROBLEM	POSSIBLE CAUSES	WHAT TO DO
Display will not turn on	No power.	Ensure the dryer is plugged in and the power supply is turned on at the wall.
Display not responding	Dryer needs to be reset.	Press the dial to turn the dryer off. Wait a few seconds, then press the dial again to turn the dryer back on. If the problem persists, try turning the dryer off and on again at the wall. The display may take a few seconds to load.
	Software update may be required.	If the dryer is connected to Wi-Fi, check if any updates are available.
Dryer does not heat	Water tank is full.	Ensure the water tank is empty. Refer to 'Water tank'.
	The cycle is in the COOLING phase.	This is normal. Wait for the cycle to finish.
Dryer will not start	The door is not properly closed.	Ensure the door is firmly shut. Check lint filter is not obstructing the door.
	Is the dryer displaying a user warning or fault code?	Refer to 'Fault codes'.
	Water tank is full or not correctly in place.	Ensure the water tank is empty and correctly in place. Refer to 'Water tank'.
	Dryer is overloaded.	Remove some items from the dryer.
	DELAYED START is set.	Refer to 'Cycle options'.
	The controls are locked.	Press and hold the screen to unlock the controls.
Dryer stops and starts	WRINKLE FREE is on.	This is normal. Refer to 'Cycle options.'
Dryer stops mid-cycle	Power failure.	Press ► to resume the cycle.
	Cycle has been paused.	Press ► to resume the cycle.
	Door is open.	Ensure the door is firmly shut.
	Items fell off the rack during RACK DRY.	Ensure the rack is installed correctly and replace items on the rack.
Noises	Dryer is overloaded.	Remove some items from the dryer.
	Dryer has a fault.	Refer to 'Fault codes'.
	End of a cycle.	Go to SETTINGS and turn off alerts. Refer to 'Menu'.
	Dryer is not level.	Ensure the dryer is level. Refer to installation guide.
	Compressor noises.	This is normal. At the start of the cycle the dryer may make some unfamiliar noises when the compressor turns on.

TROUBLESHOOTING

PROBLEM	POSSIBLE CAUSES	WHAT TO DO
Vibration	Dryer is not installed on a stable surface.	Ensure the dryer is installed on a flat, stable surface. Refer to installation guide.
	Dryer is not level.	Ensure the dryer is level. Refer to installation guide.
	Dryer is overloaded.	Remove some items from the dryer.
Cycle taking too long	Cycle selected not appropriate for the load.	Select an appropriate cycle for the load. Refer to 'Cycles'.
	Dryness level selected not appropriate for the load.	Select a lower dryness level. Refer to 'Cycle settings'.
	Dryer is overloaded.	Remove some items from the dryer.
	Lint filter, condenser filter, filter foam or evaporator grid is blocked.	Check and clean the lint filter, condenser filter, filter foam and evaporator grid. If the problem persists the filter foam may need to be replaced. Refer to 'Condenser filter.'
	Water tank is full.	Refer to 'Water tank'.
	Environmental conditions may be affecting operation.	In particularly hot or cold conditions cycles may take longer and be less efficient. Ensure the dryer is installed in a well-ventilated, dust-free environment. Do not operate this dryer behind closed doors (ie inside a cupboard).
	Load overly wet at the start of cycle.	Remove more water from the load before placing it in the dryer, eg select a faster spin speed on your washer, if appropriate for your load.
	Load was damp dry at the start of cycle.	If the load had been partially air dried, eg has been washed and placed on the line, use a TIME DRY cycle and monitor the dryness of your clothes.
	Dryer is not draining properly.	Check the drain hose (if connected) for blockages or damage. If the problem persists contact Customer Care.
Items are tangled.	Try separating items and drying similar items together. Refer to 'Loading suggestions'.	

TROUBLESHOOTING

PROBLEM	POSSIBLE CAUSES	WHAT TO DO
Lint	Lint filter not cleaned or replaced.	Ensure the lint filter is cleaned after every cycle and replaced correctly. Refer to 'Lint filter'.
	Loads not sorted correctly.	Dry lint-giving items separately from lint receivers. Also, dry similar colours together, eg light coloured items with light coloured items, dark items with dark items. Refer to 'Loading suggestions'.
	Clothes over dried.	Over drying clothes in the dryer can cause them to attract lint. Use an auto sensing cycle or ensure you check your load if using the time dry cycles to avoid over drying.
	New items have been dried in the dryer recently.	Clean the lint filter and use COOL AIR cycle to clear any remaining lint from the dryer.
	New towels or flannelette sheets can leave lint in the dryer, which may be picked up by subsequent loads.	
Fabric damage	Instructions on care label not followed.	Follow the instructions on the care label of the items.
	Dryness level selected not appropriate for the fabric type	Ensure dryness level selected is appropriate for the fabric type. Refer to the item's care label.
	Metal parts on the items or in the load.	Fasten zips and other clasps before placing items in the dryer.
	Items not separated or dried on an appropriate cycle for the fabric type.	Dry similar items together. Ensure an appropriate cycle is selected. Refer to 'Cycles'.
	Items fell off the rack during RACK DRY.	Ensure the rack is installed correctly and only one or two items are placed on the rack at a time. Refer to 'Rack dry'.
	Used a TIME DRY cycle and did not monitor the dryness of clothes during the cycle.	Ensure that clothes are checked for dryness during the cycle when using the timed programmes to avoid over drying.
	Cycle selected not appropriate for the load.	Select an appropriate cycle for the load. Refer to 'Cycles'.
	Items removed from dryer before cycle has finished.	Removing items before the COOLING phase may cause damage. Spread items out and allow to cool fully before putting away.

TROUBLESHOOTING

PROBLEM	POSSIBLE CAUSES	WHAT TO DO
Tangling	Loads not separated during loading.	Try separating out larger items from smaller items.
	Items loaded into the dryer incorrectly.	Load items individually into the dryer. Do not place folded items in the dryer.
	Incorrect cycle selection.	Try using the EASY IRON cycle to dry shirts and the SHEETS cycle to dry sheets. Refer to 'Cycles'.
	Load size too large.	Try drying smaller load sizes. Some cycles have a lower maximum load size. Refer to 'Cycles'.
	Delicate items not separated in a mesh bag.	Dry pantyhose, bras, stockings and any other delicate items prone to tangling in a mesh bag.
	Sheets and duvet/doona covers due to their size, are prone to tangling.	Dry sheets and duvet/doona covers separately from other laundry, apart from towels. Ensure duvet/doona covers are buttoned or fastened closed before drying. When washing sheets, adding a towel tied in a knot may help to prevent tangling.
Creasing	Cycle selected not appropriate for the load.	Select EASY IRON to minimise creasing.
	Dryer is overloaded.	Remove some items from the dryer.
	Dryness level selected not appropriate for the load.	Select a lower dryness level. Refer to 'Cycle settings'.
	WRINKLE FREE is not on.	Select the WRINKLE FREE option to rotate the load at the end of the drying cycle. Refer to 'Cycle options'.
Dye transfer	White/light and coloured items not separated before drying.	Sort white/light and coloured items into separate loads.
	Wet items left sitting in the dryer before drying.	Refer to 'Loading suggestions'.

TROUBLESHOOTING

PROBLEM	POSSIBLE CAUSES	WHAT TO DO
Dryer not draining	Drain hose not connected to the water tank.	Ensure the drain hose is connected correctly. Refer to installation guide.
	Water tank not correctly in place.	Ensure the water tank is correctly in place.
	Drain hose or drain blocked or damaged.	Check drain hose (if connected) and drain for blockages or damage.
Dryer is beeping and displaying a code	Dryer has a fault.	Try turning the dryer off and waiting one minute before turning it back on. If the fault code persists contact Customer Care. Refer to 'Fault codes'.
Water coming from under the dryer	Water tank not correctly in place.	Ensure the water tank is correctly in place.
	Water tank is full.	Ensure the water tank is empty. Refer to 'Water tank'.
	Water tank may be damaged.	Check the water tank for any signs of damage.
	Drain hose not connected to the water tank.	Ensure the drain hose is connected correctly. Refer to installation guide.
	Drain hose or drain blocked or damaged.	Check drain hose (if connected) and drain for blockages or damage.
	Drain hose has slipped out of the drain.	Ensure the drain hose is securely fixed in place. Drain hoses can move or get displaced, which may lead to water draining onto the floor.
	Dryer door not closing properly, affecting the seal.	Ensure there is nothing obstructing the door opening and that the dryer door is closed properly.
	Inlet hose not correctly tightened.	Check inlet hose and tighten connection if necessary. Refer to installation guide.
Water in drum at end of cycle	Water tank is full.	Ensure the water tank is empty. Refer to 'Water tank'.
	Environmental conditions may be affecting operation.	In particularly hot, humid or cold conditions water may re-condense in the drum or on the inside of the door.

FAULT CODES

How do I know if there is a problem?

Your dryer will beep and an alert will show in the display.

What to do

First try to fix the issue and clear the alert according to the instructions onscreen or the steps in the following table.

If the problem persists

- ① Note down the fault code.
- ② Contact Customer Care or a Fisher & Paykel trained and supported service technician. Refer to the Service and Warranty booklet for contact details.

'E' fault codes

You may be able to clear the fault by resetting the dryer. Follow the steps below:

- ① Press the dial to turn the dryer off.
- ② Wait a few seconds, then press the dial again to turn the dryer back on.

If the fault code has disappeared, the fault has been reset and you can continue to use your dryer.

ALERT	WHAT TO DO
LOCKED	Press and hold the screen to unlock the controls.
CHECK FILTERS	Clean lint and condenser filters and carefully vacuum the evaporator grid. Check the lint filter or condenser filter are not damaged. Check there is nothing else trapped in the filters or evaporator grid, which may be blocking the air flow.
WATER TANK FULL	Check if the water tank is full. Empty the water tank. If using the drain hose, check whether the water tank or drain hose is blocked. Check the drain hose is still attached at the back of the machine, and is not kinked or squashed.
CLOSE DOOR	Ensure the door is firmly shut, then press ► to resume the cycle. Try opening and closing the door again. Reposition the load, ensuring items are not in the way of the door.
COOLING DOWN	Wait for the dryer to cool. The cycle will resume once the drum has cooled.
ROOM TEMP LOW	The room temperature is too low for the dryer to work effectively. Ensure that the room temperature is above 5°C to avoid loss of efficiency.
ROOM TEMP HIGH	The room temperature is too hot for the dryer to work effectively. Wait for environment to cool before resuming.
MAX TIME REACHED	There are a number of reasons the maximum cycle time might be reached. Refer to 'Troubleshooting'.

MANUFACTURER'S WARRANTY AND SERVICE GUIDE



To access your Warranty and Service Guide

Scan the QR code with your smartphone to access your warranty and book a service, or view online at https://www.fisherpaykel.com/cn/zh_CN/help-and-support/warranty-information

This product has been designed for use in a domestic (residential) environment. This product is not designed for any commercial use. Any commercial use by the customer will affect this product's Manufacturer's Warranty.

Manufacturing address:

Qingdao Jiaonan Haier Washing Machine Company Ltd.

No.558 Jiao Zhou Wan Xi Road, Huangdao District, Qingdao, Shandong Province P.R. China

Complete and keep for safe reference:

Model _____

Serial No. _____

Purchase Date _____

Purchaser _____

Dealer _____

Suburb _____

Town _____

Country _____

FISHERPAYKEL.COM

© Fisher & Paykel Appliances 2026. All rights reserved.

The models shown in this guide may not be available in all markets
and are subject to change at any time.

The product specifications in this guide apply to the specific products and
models described at the date of issue. Under our policy of continuous product
improvement, these specifications may change at any time.

For current details about model and specification availability in your country,
please go to our website or contact your local Fisher & Paykel dealer.

431963B 05.26