
QUAD DOOR REFRIGERATOR FREEZER FIRST USE

Get to know your appliance	10
Set a temperature & food mode	13
Adjust the shelves	15
Use the ice & water dispensers	16
Set up Wi-Fi	21
Clean & maintain your appliance	22

QUAD DOOR REFRIGERATOR FREEZER

RF620QNTVX1, RF620QNTVD1, RF620QNPVX1, RF620QNPVB1,
RF620QZPVG1

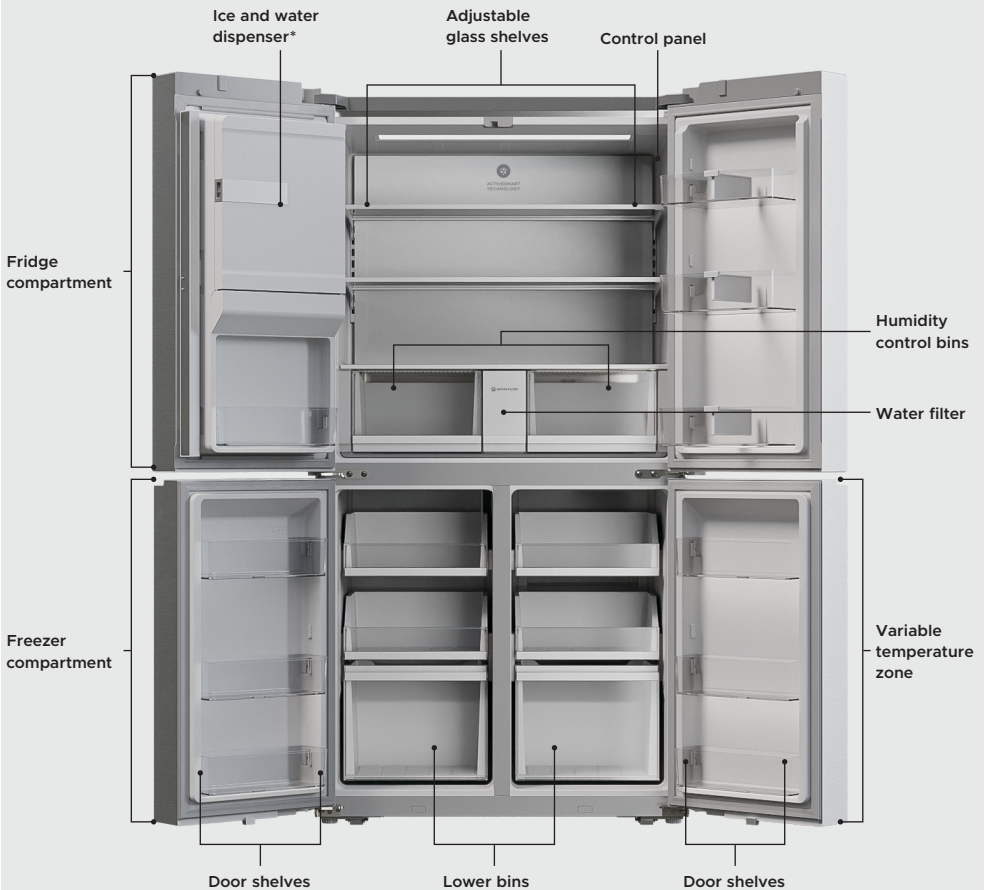
GET TO KNOW YOUR APPLIANCE

EXTERNAL DISPENSER MODELS



How to get the best results from your refrigerator:

- Adjust the temperatures for each compartment as required.
- Select a food mode for the variable temperature zone to suit the items you are storing.
- Register your product to get streamlined service support
- Connect to Wi-Fi to access your appliance via the app.



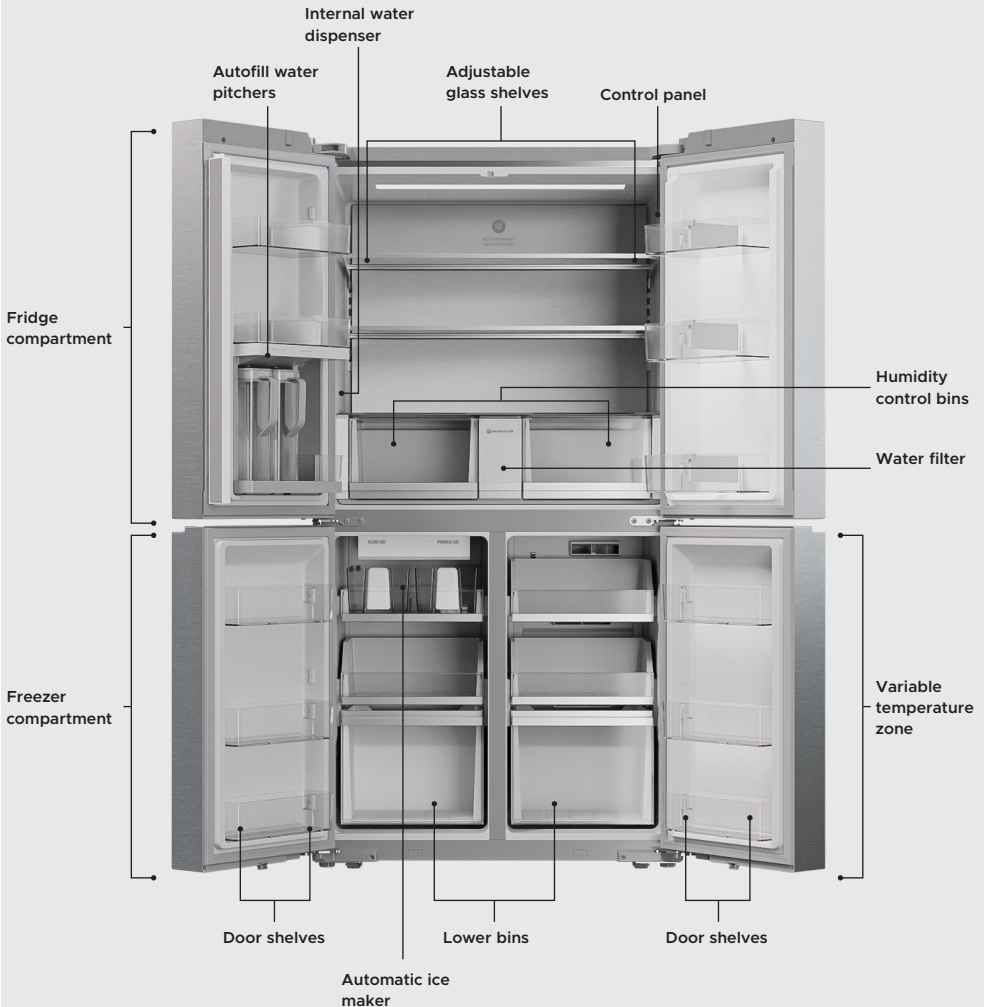
*Located on front of door

GET TO KNOW YOUR APPLIANCE INTERNAL DISPENSER MODELS



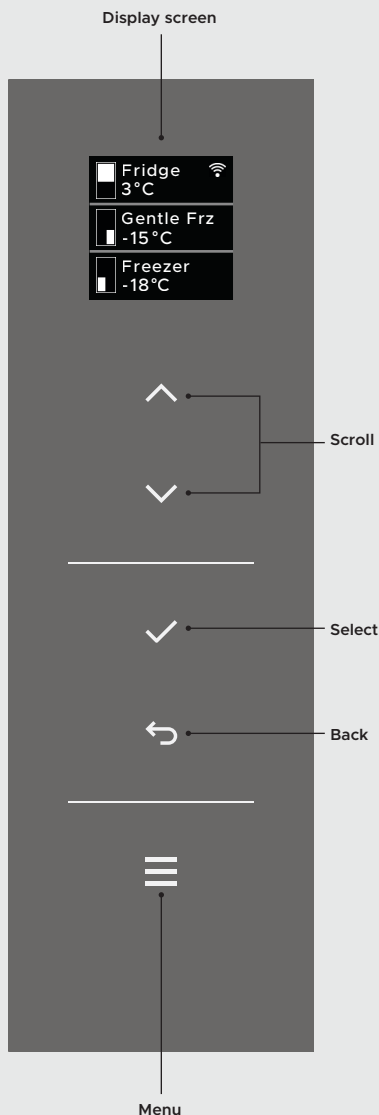
How to get the best results from your refrigerator:

- Adjust the temperatures for each compartment as required.
- Select a food mode for the variable temperature zone to suit the items you are storing.
- Register your product to get streamlined service support
- Connect to Wi-Fi to access your appliance via the app.



GET TO KNOW YOUR APPLIANCE CONTROL PANEL & MENU

CONTROL PANEL



Use the menu to access product features and settings, or to return to standby. If the display has been locked, hold for two seconds to unlock.

Temperature

Select a mode or adjust the temperature.

Ice

Turn the ice maker on or off.

Ice Boost*

Boost ice production for the next 24 hours.

Max Cold

Quickly cool down items that have just been added to the product.

Bottle Chill

Set a 15-minute timer when chilling wine or other beverages in the freezer.

Water Dispenser

Lock the water dispenser to prevent accidental use.

Autofill Pitchers*

Turn autofill on or off.

Door Alarm

Mute the door alarm for 20 minutes or until the door is closed again.

Display Lock

Lock the controls to prevent accidental use.

Sabbath Mode

For the Sabbath observant. In Sabbath Mode alarms, lights and the display will be deactivated for 80 hours.

The lights will not turn on when you open the door.

- The door alarm will not operate.
- The display will not illuminate.
- The display will be unresponsive.

Settings

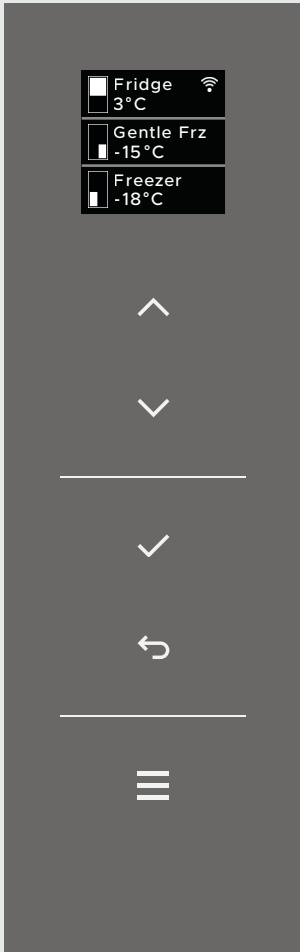
Adjust the appliance settings to suit your preferences or set up a Wi-Fi connection. Refer to 'Wi-Fi connection'.

*Internal dispenser models only

SET A TEMPERATURE & FOOD MODE



Select a food mode for the variable temperature zone as needed and adjust the temperatures for each compartment to suit the items you are storing



Select a compartment:

1. Use the arrows ∇ or \blacktriangle to select a compartment, then press select \checkmark to confirm.

Fridge and Freezer compartments:

Use the arrows ∇ or \blacktriangle to adjust the temperature as needed, then press select \checkmark to confirm.

Variable temperature zone:

1. Use the arrows ∇ or \blacktriangle to select a food mode, then press select \checkmark to confirm.
2. Use the arrows ∇ or \blacktriangle to adjust the temperature as needed, then press select \checkmark to confirm.

Press the back button \leftarrow at any point to exit the menu.

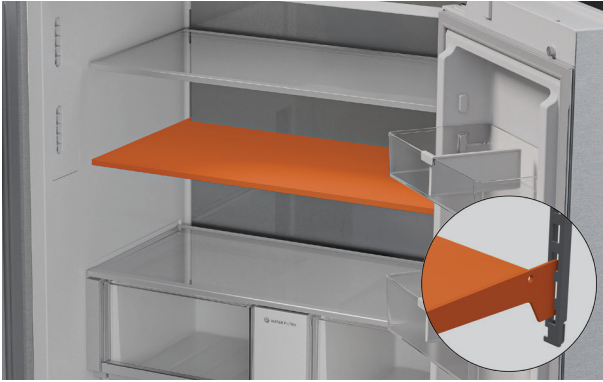
SET A TEMPERATURE & FOOD MODE



The following food modes and temperatures are available for each compartment.

COMPARTMENT	MODE	
Fridge compartment	FRIDGE (1 to 8°C)	For fresh, everyday foods such as fruit and vegetables, dairy products, meats, seafood, ready-to-eat foods, leftovers, sauces, preserves and drinks.
	FREEZER (-22 to -14°C)	For general frozen items that require storage between 1 – 12 months.
Variable temperature zone	FRIDGE (1 to 5°C)	For fresh, everyday foods such as fruit and vegetables, dairy products, meats, seafood, ready-to-eat foods, leftovers, sauces, preserves and drinks.
	CHILL (-2 to 1°C)	Store highly perishable meats and seafood for longer. Also for chilling alcoholic beverages such as beer, champagne and wine.
	SOFT FREEZE (-9 to -5°C)	An extension of your refrigerator. Extends shelf life of fresh items for weeks.
	GENTLE FREEZE (-18 to -13°C)	A gentle freezer setting for shorter term frozen storage of perishable foods and faster defrosting.

ADJUST THE SHELVES



Glass shelves

Adjust height or remove as needed. The shelves hook onto supports at the rear.

To remove, tilt shelf up to dislodge it from support, then pull it out.

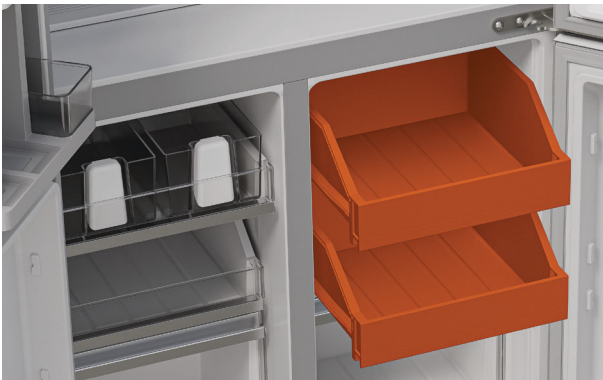
To refit, hook the shelf back onto supports at desired height.



Door shelves

Adjust height or remove. Shelves slot onto the hooks on the sides of the door.

Adjust or remove the shelf dividers as needed.



Bins

The bins in each compartment can be removed as needed for cleaning or making extra space.

To remove, slide the bin out then tilt up to lift free of the side runners.

To refit, place back on the side runners and push back into place.

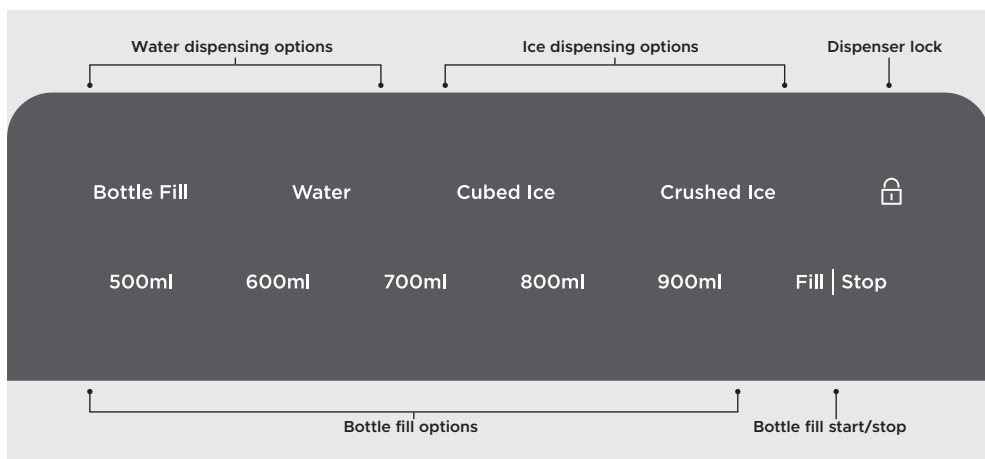
USE THE ICE & WATER DISPENSERS EXTERNAL DISPENSER MODELS

Your refrigerator comes with a dual ice and water dispenser located on the front of the left hand door.

For best results:

- Flush the water filter before using the dispenser for the first time. To do this, run 8 litres of water through the dispenser using the Water option (not Bottle Fill).
- Turn the ice maker on to start making ice.
- Replace your water filter as soon as possible after you get a reminder.
- When using the dispenser for the first time it may take a few minutes for water to begin flowing.
- When dispensing a lot of water a time-out period may occur. Wait a few minutes before using the dispenser again.

DISPENSER CONTROLS



Water dispensing options	Press to select a water dispensing option.
Bottle fill options	Press to select the water volume needed.
Bottle fill start/stop	Press to start bottle fill, and to manually stop bottle fill if needed.
Ice dispensing options	Press to select a type of ice.
Dispenser lock	Press and hold to lock or unlock the dispenser.

USE THE ICE & WATER DISPENSERS EXTERNAL DISPENSER MODELS



Dispensing water

Select Water, then gently press the dispensing pad with a glass or container.

Pressing harder will not increase the flow of water.

To stop, simply pull your glass or container away from the dispensing pad.



Using Bottle Fill

Select Bottle Fill and the required volume. Ensure the selected volume is less than the bottle size.

Place the bottle on the shelf and press Fill | Stop.

The bottle will automatically fill to the set volume.

To stop dispensing early, press Fill | Stop again.

Sensor light

The dispenser has a sensor light that will automatically turn on when you are near the appliance. This can be turned on or off by going to the menu on the main control panel inside the fridge and selecting **SETTINGS**, then **SENSOR LIGHT**.

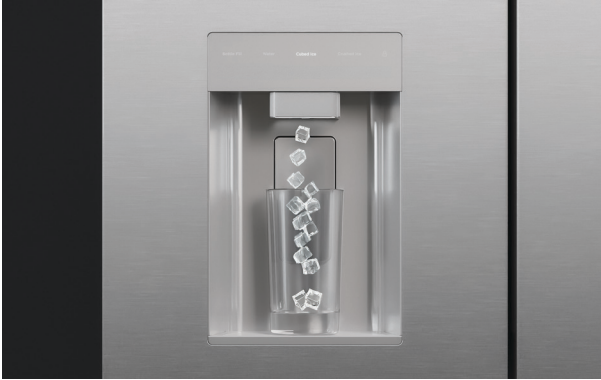
When the sensor light is turned off, the dispenser controls will remain unlit until you touch the controls or press the dispensing pad. The main dispenser light will remain off completely.

USE THE ICE & WATER DISPENSERS EXTERNAL DISPENSER MODELS

Turning the ice maker on

Before using the ice dispenser for the first time, you'll need to turn the ice maker on. The ice maker can be turned on by going to the menu on the main control panel inside the fridge and selecting ICE.

When first turned on it may take several hours to begin producing ice.



Dispensing ice

Select an ice type, then gently press the dispensing pad with a glass or container.

Pressing harder will not increase the flow of ice.

To stop, simply pull your glass or container away from the dispensing pad.

Turn your ice maker off if:

- There is no water supply for several hours.
- You are going on holiday.

The ice maker can be turned on or off by going to the menu on the main control panel inside the fridge

USE THE ICE & WATER DISPENSERS INTERNAL DISPENSER MODELS

Your refrigerator comes with two autofill pitchers, a water dispenser and a dual automatic ice maker.

For best results:

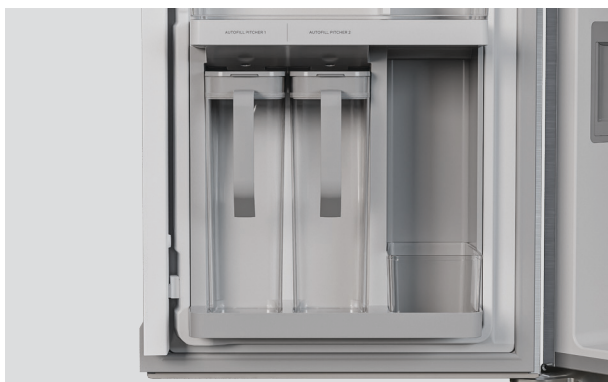
- Flush the water filter before using the dispenser for the first time. To do this, run 8 litres of water through the water dispenser.
- Discard the first full bins of ice as they may be discoloured.
- When using the dispenser for the first time it may take a few minutes for water to begin flowing.
- When dispensing a lot of water a time-out period may occur. Wait a few minutes before using the dispenser again.
- Replace your water filter as soon as possible after you get a reminder.

..... AUTOFILL PITCHERS



Position the pitchers on the dispenser shelf to activate the dispenser.

Tilt the pitchers forward slightly to insert, ensuring they are correctly positioned in the slots.



The dispenser light will be illuminated when the pitchers are correctly positioned and the dispenser is turned on.

The autofill pitchers can be turned on or off by going to the menu.

When the doors are closed the pitchers will fill automatically and stop when they are full.

Take care when closing the door and do not over fill the bottom refrigerator shelf. Any bulky or overhanging items on the shelf may dislodge the pitchers when the door is closed.

USE THE ICE & WATER DISPENSERS INTERNAL DISPENSER MODELS

..... WATER DISPENSER



Gently press the dispensing pad with a glass or container.

Pressing harder will not increase the flow of water.

To stop, simply pull your glass or container away from the dispensing pad.

The water dispenser can be locked for cleaning or to prevent accidental use by going to the menu.

..... DUAL AUTOMATIC ICE MAKER

The dual automatic ice maker is located at the top of the freezer compartment and automatically produces two different types of ice into the bins below. Keep the ice cubes level in the bin to maximise storage space.

When first turned on it may take several hours to begin producing ice.



The left hand ice maker produces cube ice and the right hand ice maker produces pebble ice.

There are removable scoops on the front of each bin.

The ice maker can be turned on or off by going to the menu.

Turn your ice maker off if:

- There is no water supply for several hours.
- You are removing the ice storage bin for a long period of time.
- You are going on holiday.

Making extra ice

You can turn on **ICE BOOST** to make extra ice for up to 24 hours. Turn **ICE BOOST** on or off via the menu.

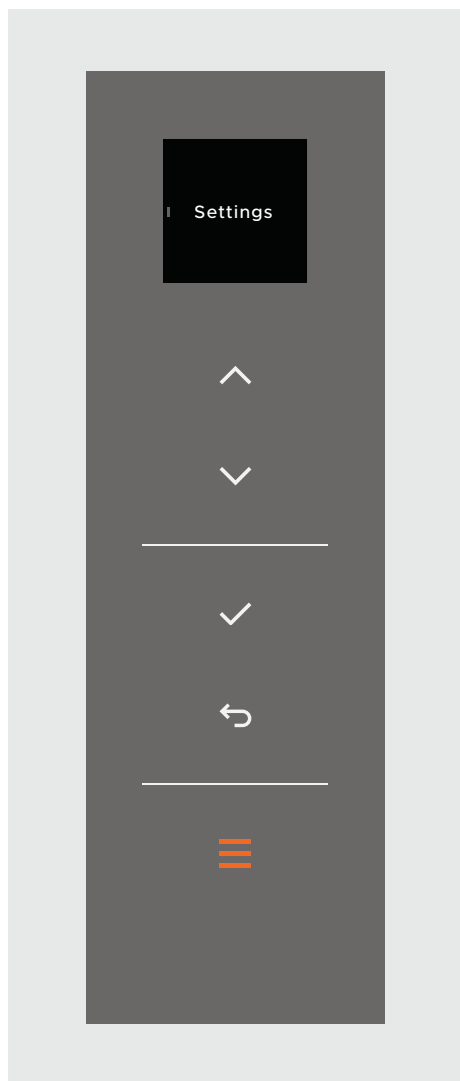
SET UP WI-FI

Your appliance may be connected to your home wireless network and operated remotely using the app.

Getting started

- Ensure your home Wi-Fi network and Bluetooth on your mobile device are turned on.
- You will be given step-by-step guidance on mobile device.
- It may take up to 10 minutes to connect your appliance.




Connecting to Wi-Fi



On your mobile device:


- ① Download the app from www.fisherpaykel.com/connect
- ② Register and create an account.
- ③ Add your appliance and set up the Wi-Fi connection.

On your appliance

1. Press the menu button  to access the menu, then use the arrows  or  to scroll to **SETTINGS**.

Press select  to enter settings.

2. Press the arrows  or  to scroll to **WI-FI SETUP**.

Press select  to enter Wi-Fi setup.

3. Follow the prompts on the display and in the app to complete setup.

Make these steps a regular part of your cleaning routine to get the best results from your appliance.

- Remove shelves and bins to make cleaning easier.
- Do not use harsh or abrasive cleaners.
- Replace your water filter regularly.

Internal surfaces, shelves and bins

Remove shelves and bins as needed. Clean with a damp cloth and mild detergent. Dry with a clean, lint-free cloth. Use a small brush to clean difficult to reach spots if needed.

Exterior surfaces and door

Clean with warm water and mild detergent. Rinse with clean water and dry with a clean, lint-free cloth. Do not use any abrasive stainless steel cleaners, glass cleaners, solvents or scourer pads as these will damage the door surface. Use a small brush with warm water and mild detergent to clean around the door seal as needed.

Cabinet surround

We recommend regularly vacuuming the floor around your appliance and cleaning behind it once or twice a year to maintain optimum performance.

Water filter

You will get a reminder when it's time to replace your water filter. We recommend replacing the filter as soon as possible after getting the alert. To fit the replacement filter, follow the instructions supplied with new filter.

Water dispenser

Lock the dispenser before cleaning to prevent water spilling. Clean with a damp cloth.

External dispenser models only: Remove the drip tray and clean with water and mild detergent. Ensure the drip tray is back in place before using the dispenser again.

Autofill water pitchers (internal dispenser models only)

The water pitchers can be taken apart and cleaned using hot water and mild detergent. We recommend washing the pitchers before using them for the first time.



Care, maintenance and troubleshooting information

Scan the QR code or visit fisherpaykel.com and search for your model code.

RF620QNTVX1, RF620QNTVD1, RF620QNPVX1,
RF620QNPVB1, RF620QZPVG1

FISHERPAYKEL.COM

© Fisher & Paykel Appliances 2026. All rights reserved.

The models shown in this guide may not be available in all markets
and are subject to change at any time.

The product specifications in this guide apply to the specific products and models
described at the date of issue. Under our policy of continuous product improvement, these
specifications may change at any time.

For current details about model and specification availability in your country,
please go to our website or contact your local Fisher & Paykel dealer.

433784A 04.26