
INDUCTION COOKTOPS

INSTALLATION GUIDE

Components required	3
Accessing your product specifications	4
Prior to installation	5
Proud installation	7
Flush installation	9
Electrical specifications	11
Installer checklist	12

FISHER & PAYKEL

CN

433243A 02.26

90CM

CI905ZZDTB5 CI905ZZDTG5

80CM

CI804ZZDTB5 CI804ZZDTG5

60CM

CI604ZZDTB5 CI604ZZDTG5

30CM

CI302ZDTB5

COMPONENTS REQUIRED

TOOLS

Not supplied

- Silicone gun
- Phillips screwdriver
- Level
- Box cutter
- Router
- Hex key
- Spanner
- Masking tape
- Duct tape
- Black installations:
Black, matte finish silicone rated to
100°C or above
- Grey installations:
Grey, matte finish silicone rated to
100°C or above

PARTS

Supplied and required

- Securing brackets (4)
- Clamp screws (4)
- Foam tape (1)

ACCESSING YOUR PRODUCT SPECIFICATIONS



For full product, cabinetry and service specifications, refer to the Planning Guide. To access the Planning Guide, scan the QR code or visit fisherpaykel.com/specify. Search by appliance type, product name or model code.

For installation support please contact the Fisher & Paykel design support team at designsupport@fisherpaykel.com

PRIOR TO INSTALLATION



fisherpaykel.com/specify

1. Refer to the Planning Guide for cabinetry, cavity, panel and service specifications.



2. Carefully remove products from cartons. Set aside on a protected surface.



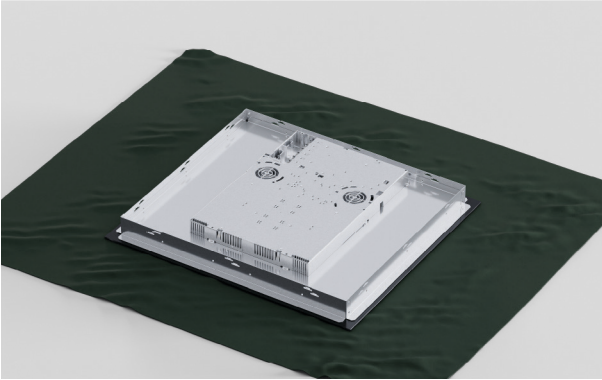
3. Ensure all products and accessories are present.

PRIOR TO INSTALLATION



4. Dispose of packaging responsibly.

PROUD INSTALLATION

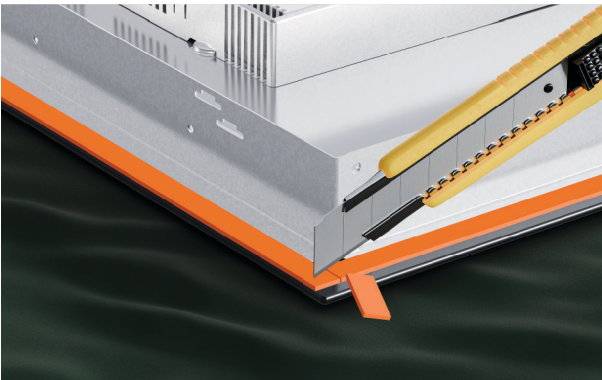


1. Turn the cooktop upside down on a protective cover.



2. Apply adhesive foam seal around the glass overhang, 5mm from the edge of the glass.

Ensure the adhesive side facing is down to form a continuous seal around the cooktop.



3. Trim the excess sealing material using a sharp cutter or trimmer knife.

Take care not to damage the bench top.

PROUD INSTALLATION



4. Ensure you have access below the countertop to fit and secure the brackets.

Gently lower the cooktop into the cutout.



5. Locate the side brackets.

Insert the brackets at the slot height to suit your countertop thickness.

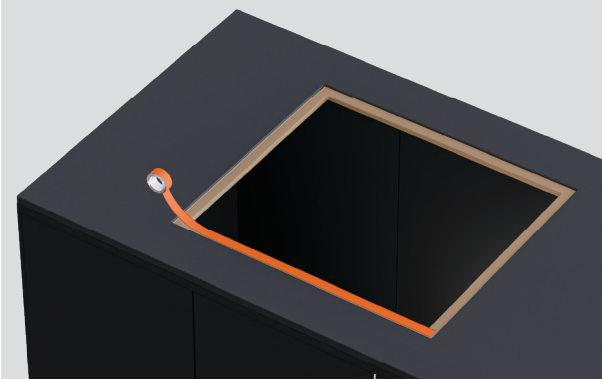


6. Tighten all screws to secure the cooktop to the countertop.

Do not overtighten

Ensure cooktop is level.

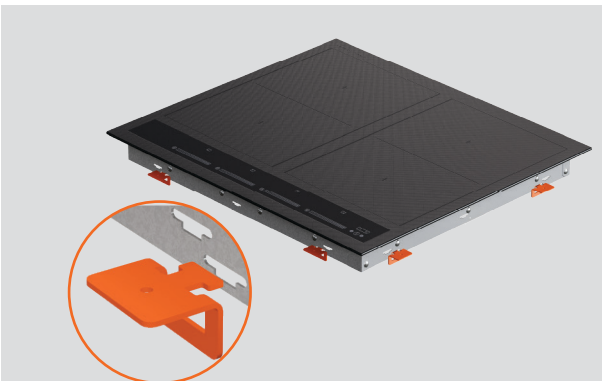
FLUSH INSTALLATION



1. Prepare the countertop for flush installation.
Attach an adhesive tape along the edges of the routed recess.

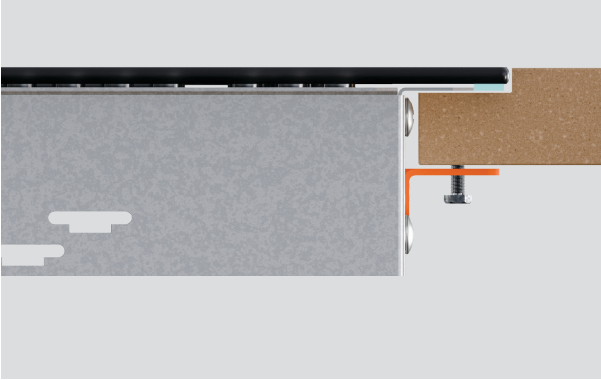


2. Ensure you have access below the countertop to fit and secure the brackets.
Gently lower the cooktop into the cutout

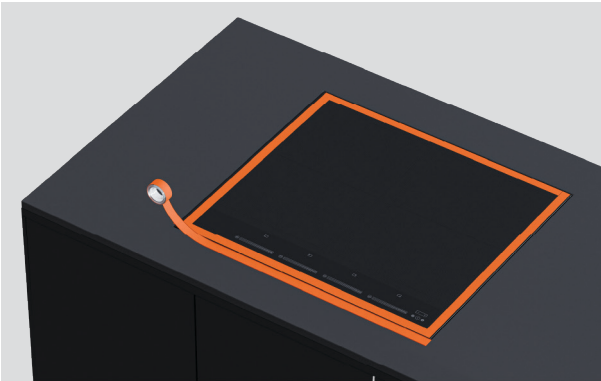


3. Locate the side brackets.
Insert the brackets at the slot height to suit your countertop thickness.

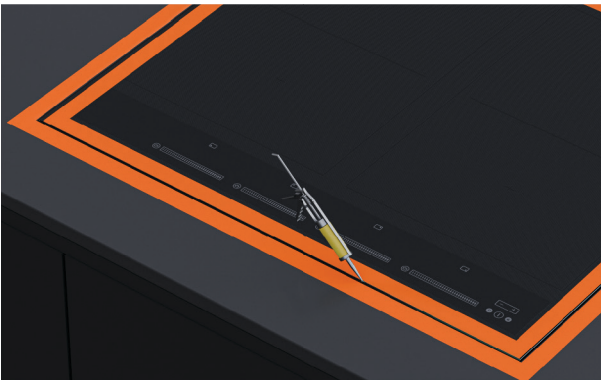
FLUSH INSTALLATION



4. Tighten all screws to secure the cooktop to the countertop. Do not overtighten. Ensure cooktop is level.



5. Apply masking tape to the cooktop glass and then the bench top,



6. Apply silicone in the gap between bench top and cooktop. Wipe off excess silicone.

ELECTRICAL SPECIFICATIONS

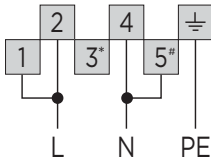
Before connecting the cooktop to the mains power supply check that:

- The domestic wiring system is suitable for the power drawn by the cooktop.
- The voltage corresponds to the value given in the rating plate.
- The power supply cable sections can withstand the load specified on the rating plate.

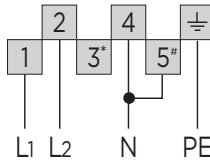
SPECIFICATIONS	MODELS CI905ZZDTB5 CI905ZZDTG5
RATED POWER (W)	10400
SUPPLY (Hz)	50/60Hz
VOLTAGE (V)	220 - 240V
DEDICATED CIRCUIT (A)	32A
	MODELS CI804ZZDTB5 CI804ZZDTG5
RATED POWER (W)	7400
SUPPLY (Hz)	50/60Hz
VOLTAGE (V)	220 - 240V
DEDICATED CIRCUIT (A)	20A
	MODELS CI604ZZDTB5 CI604ZZDTG5
RATED POWER (W)	7400
SUPPLY (Hz)	50/60Hz
VOLTAGE (V)	220 - 240V
DEDICATED CIRCUIT (A)	20A
	MODEL CI302ZDTB5
RATED POWER (W)	3700
SUPPLY (Hz)	50/60Hz
VOLTAGE (V)	220 - 240V
DEDICATED CIRCUIT (A)	16A

MODELS: 80CM, 60CM, 30CM

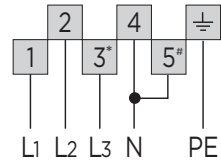
Single-phase connection (220-240V-)



Two-phase connection (380-415V 2N-)



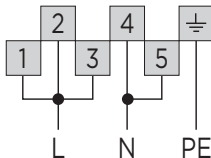
Three-phase connection (380-415V 3N-)



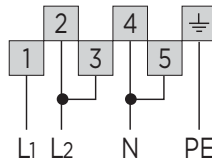
*Not internally connected. #Link not required for 30cm.

MODEL: 90CM

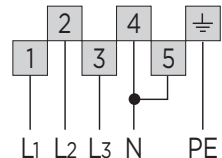
Single-phase connection (220-240V-)



Two-phase connection (380-415V 2N-)



Three-phase connection (380-415V 3N-)



INSTALLER CHECKLIST

General;

- Read safety and warnings in the user guide before operating the cooktop.
- Specified clearance maintained.
- Unit is level – front to back and side to side.
- All packaging materials have been removed.
- There is constant flow of cool air from the cabinetry to the base of the cooktop.
- Cooktop is securely clamped.
- Basic operation has been demonstrated to the customer.
- Cooking zones are functioning correctly. Turn on all of them to a high setting and leave them on for at least one minute.
- Touch controls and displays are functioning.

Electrical

- Receptacle with correctly rated over-current protection is provided for service cord connection.
- Adequate ground connection.
- Power supply cable is accessible and is not touching the cooktop.

INSTALLER CHECKLIST

Complete and keep for safe reference:

Model _____

Serial no. _____

Purchase date _____

Purchaser _____

Dealer address _____

Installer's name _____

Installer's signature _____

Installation company _____

Installation date _____

FISHERPAYKEL.COM

© Fisher & Paykel Appliances 2026. All rights reserved.

The models shown in this guide may not be available in all markets
and are subject to change at any time.

The product specifications in this guide apply to the specific products and
models described at the date of issue. Under our policy of continuous product
improvement, these specifications may change at any time.

For current details about model and specification availability in your country,
please go to our website or contact your local Fisher & Paykel dealer.

433243A 02.26