
HEAT PUMP DRYER PERFORMANCE GUIDE

Get to know your heat pump dryer	3
Set a cycle to suit the load	4
Empty the water tank	6
Clean the upper lint filter	7
Clean the lower lint filter	8
Clean and maintain the dryer	9

FISHER & PAYKEL

HEAT PUMP DRYER

DH8060J5, DH9060J5, DH8060P5, DH8060PG5, DH1060P5, DH1060PG5,
DH1060R5, DH1060RG5, DH1060T5, DH1060TG5, DH1060MZB5,
DH1060H5, DH1060HG5, DH1060HL5, DH1060YZB5, DH1060YLZB5,
DH1060D5, DH1060HLG5, DH9060D5, DH1060DG5, DH9060DG5



Download the app

- Access extra features and information
- Get the latest software updates
- Register your product for streamlined support

GET TO KNOW YOUR HEAT PUMP DRYER

Your heat pump dryer is different to a traditional vented dryer. Heat pump technology dries your items at a lower temperature than a vented dryer to ensure gentle, energy-efficient fabric care without overdrying your items.



Understanding post-dryer feel

Items may feel slightly damp when first removed from a heat pump dryer, but they will feel completely dry within a few minutes and are ready to wear immediately. If you prefer your items to feel completely dry as soon as the drying cycle ends, you can adjust the dryness level.



Adjusting dryness level

Set the dryness level from 1 (Iron Ready) to 4 (Extra Dry) depending on your model.

- 1 – Iron Ready – Items remain slightly damp for easy ironing.
- 2 – Dry – Feels dry, with a small amount of moisture to prevent static.
- 3 – Dry + Extra Dry / Dry Plus – Very dry with minimal moisture left.
- 4 – Extra Dry – The highest level of drying. Best for towels and linens.



Choosing a location for your dryer

Ensure your dryer is installed in a well-ventilated area that is not subject to very low or high temperatures. Room temperatures below 10°C or above 30°C will cause reduced performance.



Finishing air-dried items in the dryer

Use a **TIME DRY** cycle for at least 30 minutes to finish partially dry items. This allows time for the dryer to reach temperature.



Loading items directly from the washing machine

Make sure items have been through a spin cycle to remove excess water before placing them in the dryer. Overly wet items will extend the drying cycle and may affect drying performance.

SET A CYCLE TO SUIT THE LOAD



The maximum load size for your dryer changes based on the type of items in a load.

Allow enough space for items to tumble freely. Use the guide below to select the appropriate cycle and avoid overfilling the dryer to maintain good drying performance.



Fibre	Item type	Max weight	Max capacity
Mixed, Cotton, Polyester	Ultra delicate	1kg	Extra small
	Delicate	4kg	Small
	Moderate, Durable	9kg	Large
	Sheets, Towels, Denim, Sports, Bulky	4kg	Medium
	Outdoors	2kg	Small
	Soft toys		4 toys
	Shoes		2 pairs
Wool	Ultra delicate, Delicate	1kg	Extra small
Elastane	Ultra delicate	1kg	Extra small
	Delicate	4kg	Small
	Moderate	4kg	Medium

SET A CYCLE TO SUIT THE LOAD

Down	Ultra delicate	1kg	Extra small
	Delicate	4kg	Small
	Bulky	3kg	Medium
	Quilts & duvets		1 item
Silk	Ultra delicate	1kg	Extra small
Linen	Ultra delicate	1kg	Extra small
	Delicate	2kg	Small
	Moderate	4kg	Medium
	Sheets	4kg	Medium
	Towels	4kg	Medium
Nylon	Ultra delicate	1kg	Extra small
	Delicate	2kg	Small
	Outdoors	2kg	Small
Acrylic, Hemp, Ramie	Ultra delicate	1kg	Extra small
	Delicate	2kg	Small
	Moderate	2kg	Small
Viscose, Lyocell	Ultra delicate	1kg	Extra small
	Delicate	2kg	Small
	Moderate	4kg	Medium
Cashmere	Ultra delicate		1 item
Other treatments	Rack dry		1 or 2 items
	Steam refresh		1, 2 or 3 items
	Sanitise dry	4kg	Medium
	Allergy care		Large*

*maximum weight determined by selected fibre and cycle

EMPTY THE WATER TANK

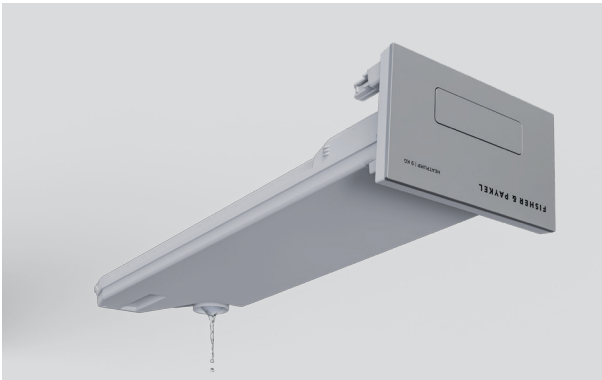


Water collects in the water tank in models with no drain hose installed. Empty the water tank before or after every load. Never run the dryer without the water tank in place unless the drain hose is installed. Refer to the installation guide for instructions if you want to install the drain hose.



1. Use the handle to pull the water tank out.

The tank can be heavy when full. Support the tank and keep it level to avoid spilling water.



2. Empty the water tank, then place it back in the dryer.

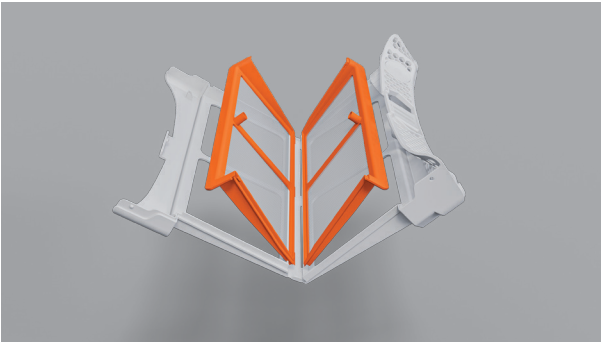
CLEAN THE UPPER LINT FILTER



Remove and clean the filter each time you use the dryer, as blocked filters will reduce drying performance, and lint can become a fire hazard if it builds up in or around your dryer.



1. Open the dryer door and remove the lint filter.



2. Open the filter and separate the parts. Use your hand or a soft cloth to remove the lint from both parts.



3. Refit the internal filter part to the outer part, then close the filter and place it back in the dryer.

CLEAN THE LOWER LINT FILTER



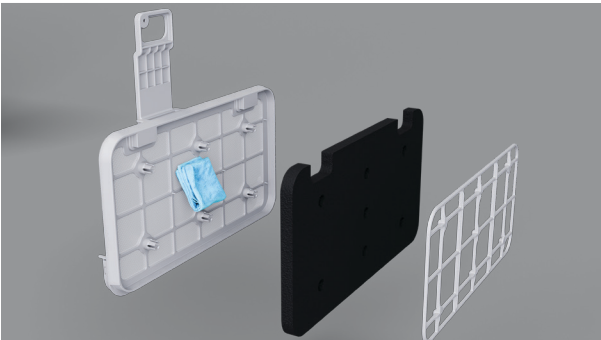
Clean the lower filter when the reminder comes on or when you notice the drying cycle taking longer than usual to maintain drying performance.



1. Remove the lint filter to access the lower lint filter.



2. Remove the lower lint filter, open it and take out the foam.



3. Use a cloth or vacuum cleaner to remove lint, then refit the foam to the mesh. Place lower filter back into the dryer, and refit the lint filter.

CLEAN AND MAINTAIN THE DRYER



Make these steps a regular part of your cleaning and maintenance routine to get the best results from your dryer.



Clean the sensors

The sensors are located behind the lint filter and detect whether the laundry is dry or not. Clean the sensors regularly with a soft damp cloth to maintain drying performance.

Clean inside the dryer drum

Check and clean the inside of the drum regularly with a damp cloth to remove any dirt or lint. Do not leave any metal objects in the drum as these may cause rust.

Clean surfaces and accessories

Wipe with a damp cloth and mild detergent, then dry with a clean, lint-free cloth. We do not recommend using the following cleaning products as they may cause damage:

- Plastic or stainless steel scouring pads
- Abrasive, solvent, household cleaners
- Acid or alkaline cleaners
- Hand wash or soap
- Stainless steel cleaners or polishes
- Laundry detergents or disinfectants

