

---

# QUAD DOOR REFRIGERATOR FREEZER INSTALLATION GUIDE

---

Components required	3
Accessing your product specifications	4
Clearances	5
Prior to installation	6
Unpack product	7
Move appliance	8
Connect services	9
Position and stabilise product	11
Flush water filter	12
Checklist	13

**FISHER & PAYKEL**

NZ AU UK IE SG

**QUAD DOOR REFRIGERATOR FREEZER**

---

RF620QNTVX1, RF620QNTVD1, RF620QNPVX1,  
RF620QNPVB1, RF620QZPVG1

# COMPONENTS REQUIRED

## TOOLS

### Supplied

- 17mm × 14mm spanner

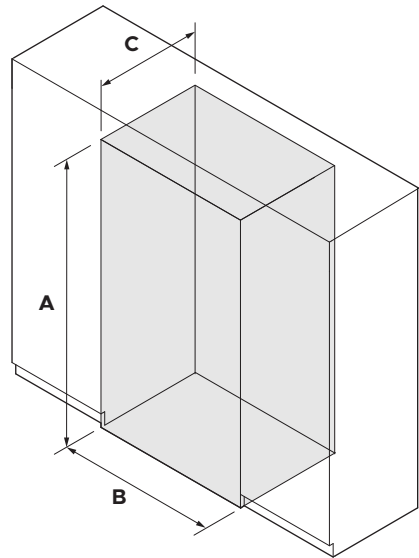
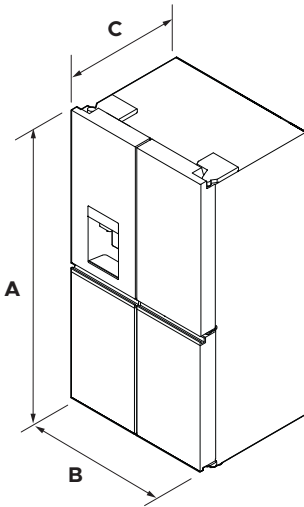
## PARTS

- Water filter (pre-installed)
- 4m Water hose
- Hose connectors (2)
- Brass tap adaptor with short tube
- Water pitchers
  - RF620QNPVX1, RF620QNPVB1, RF620QZPVG (2)
- Door shelf dividers
  - RF620QNTVX1, RF620QNTVD1 (3)
  - RF620QNPVX1, RF620QNPVB1, RF620QZPVG (5)

# ACCESSING YOUR PRODUCT SPECIFICATIONS



For full product, cabinetry and service specifications, refer to the Planning Guide. To access the Planning Guide, scan the QR code or visit [fisherpaykel.com/specify](http://fisherpaykel.com/specify). Search by appliance type, product name or model code.



PRODUCT DIMENSIONS	mm
<b>A</b> Overall height	1790
<b>B</b> Overall width	905
<b>C</b> Overall depth*	747

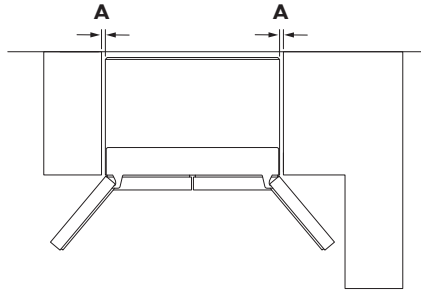
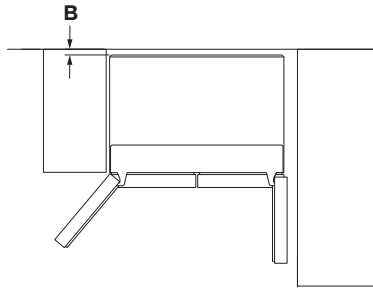
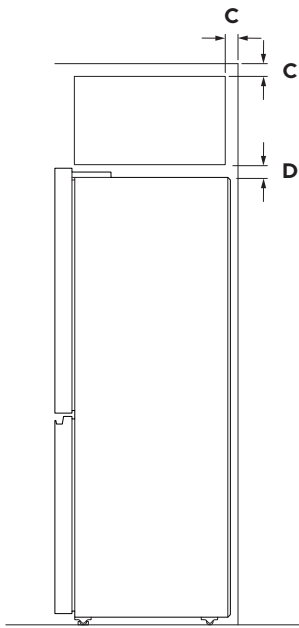
\*excludes handle

CAVITY DIMENSIONS	FLUSH	PROUD
	mm	mm
<b>A</b> Minimum inside height of cavity	1800	1800
<b>B</b> Minimum inside width of cavity	1213	995
<b>C</b> Minimum inside depth of cavity	778	660

# CLEARANCES



For full product, cabinetry and service specifications, refer to the Planning Guide. To access the Planning Guide, scan the QR code or visit [fisherpaykel.com/specify](http://fisherpaykel.com/specify). Search by appliance type, product name or model code.



CLEARANCE DIMENSIONS	FLUSH	FLUSH	PROUD
	FULL DOOR ROTATION	90° DOOR ROTATION	
	mm	mm	mm
<b>A</b> Side clearance	154	76	45
<b>B</b> Rear clearance (including rear compartment cover)	30	30	30
<b>C</b> Vent (above refrigerator cabinet or around top of cupboard)	50	50	50
<b>D</b> Top clearance (above refrigerator cabinet)	58	58	58

## PRIOR TO INSTALLATION

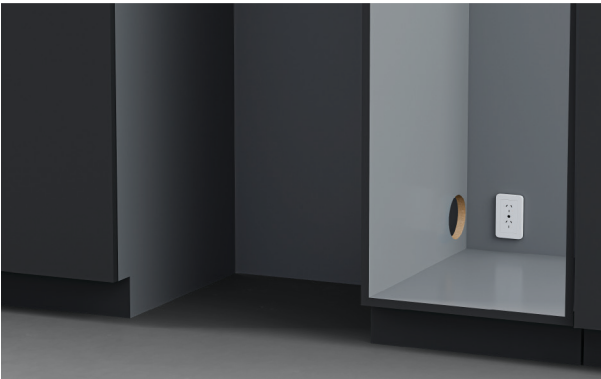


[fisherpaykel.com/specify](https://fisherpaykel.com/specify)

1. Measure cavity dimensions.  
Ensure minimum specifications have been met and clearances have been considered.



2. Ensure floor is level and clear and a finished return has been created if required.



3. Ensure services are accessible and correctly installed.  
If connections are located behind the appliance, an isolating switch is recommended.

## UNPACK PRODUCT

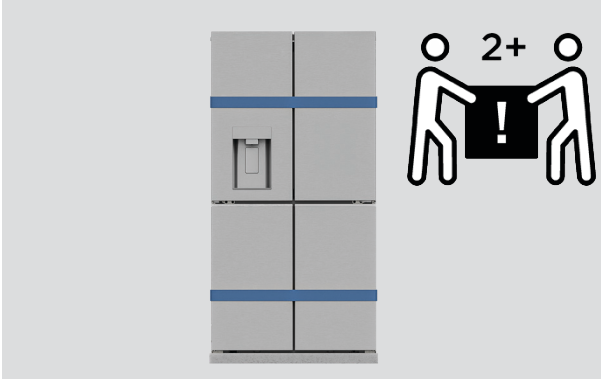


1. Cut the straps and the line printed on the top of the carton. Lift cardboard to remove.



2. Remove installation kit from inside the appliance.  
Remove autofill water pitchers from freezer drawer (internal dispenser models only).

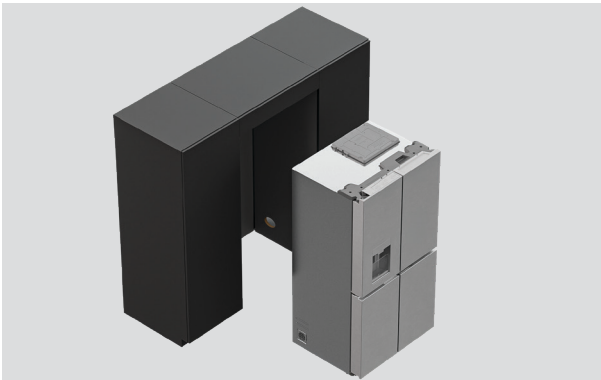
## MOVE APPLIANCE



### **Two people required at all times**

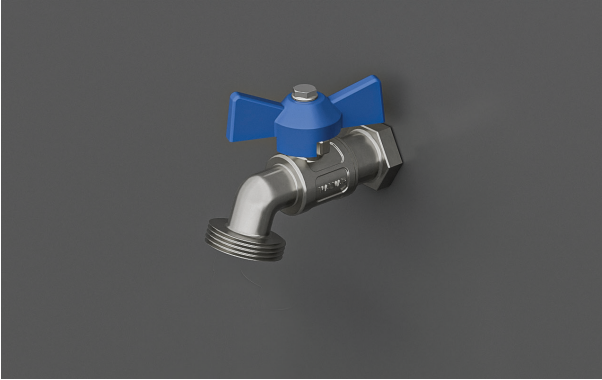
1. Take care when moving the appliance. Tape the door shut to prevent it opening.

The appliance has rollers and can be moved backwards and forwards. Avoid moving it sideways as this may damage the rollers or the floor.



2. Position the appliance next to the cavity within reach of services.

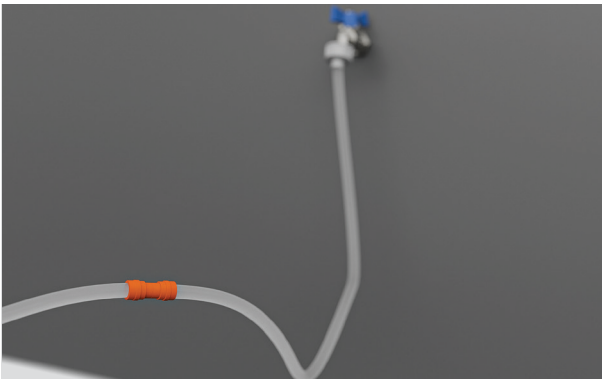
## CONNECT SERVICES



1. Ensure appliance is not connected to power supply.  
Locate isolation tap for cold water connection and water filter kit.

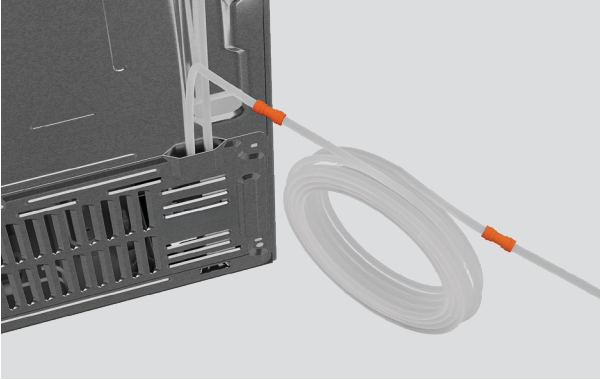


2. Fasten the tap adaptor with short tube to the isolation tap.  
Tighten by hand, then tighten one additional turn with spanner.  
Take care not to over tighten.



3. Insert short tube as far as possible into first hose connector.  
Insert 4m hose into other end of connector.

## CONNECT SERVICES



4. Attach second hose connector to the hose at the back of the product. Insert 4m hose as far as possible into second connector. Turn on water supply and check for leaks.



5. Connect product to power outlet, and turn power on.  
To reduce slack, wrap a thread around power cord.

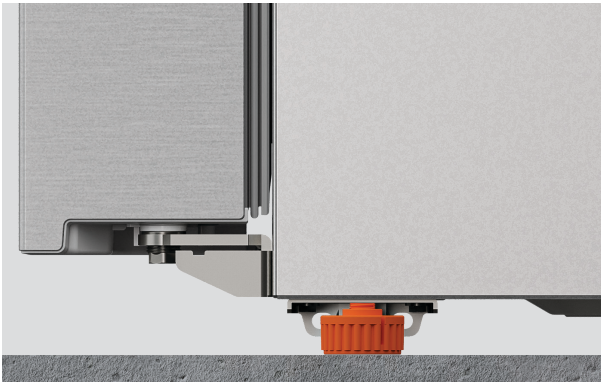
- SERVICE (A) 10
- SUPPLY (Hz) 50
- VOLTAGE (V) 230

## POSITION AND STABILISE PRODUCT

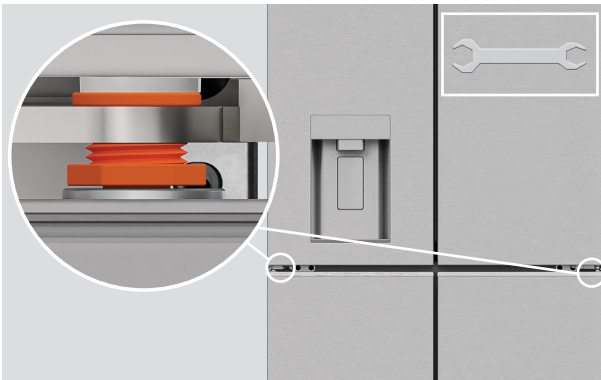


1. Roll appliance into final position.

Ensure there is the correct air gap between product and cabinetry and no cords or tubing are caught or pinched.



2. Turn the front feet clockwise until they make firm contact with the floor. This takes the load off the rollers and stabilises the product.



Levelling the doors (if required)

Use the supplied spanner to adjust the hinge nut at the bottom of each door.

## FLUSH WATER FILTER



1. Run 8 litres of water through the dispenser using the **WATER** option (not Bottle Fill). There may be a delay before water dispenses and a time-out when dispensing a high volume of water.



2. Turn the ice maker on via the menu. The first full bins of ice should be discarded.



- Access ice bin on external ice dispenser models**
- Open the upper left door, then open the hatch and remove the bin. Discard first full bin of ice.

# CHECKLIST

## Installation checks

- All clearances are correct.
- Front feet are bearing the product load, and the product does not roll forward.
- All external and internal packaging is removed.
- The isolating switch can be easily reached.
- The doors/drawer can open and close freely with no resistance from surrounding cabinetry.
- Appliance is plugged in and is cooling.

## Test operation

- Flush the water filtration system.
- Start the ice maker.

Complete and keep for safe reference:

Model \_\_\_\_\_

Serial no. \_\_\_\_\_

Purchase date \_\_\_\_\_

Purchaser \_\_\_\_\_

Dealer address \_\_\_\_\_

Installer's name \_\_\_\_\_

Installer's signature \_\_\_\_\_

Installation company \_\_\_\_\_

Installation date \_\_\_\_\_

